

Product datasheet for **AP32839PU-N**

Doublecortin (DCX) Chicken Polyclonal Antibody

Product data:

Product Type: Primary Antibodies

Applications: IF, IHC

Recommended Dilution: **Immunofluorescence/Immunocytochemistry.
Immunohistochemistry.**

Quality Control: This anti-peptide antibody mixture was validated by Immunohistochemistry (at a concentration of 2 µg/ml) using Fluorescein Conjugated Affinity-purified Goat anti-Chicken IgY antibody (Cat.-No AP31795FCN, 1/5000 dilution) as a secondary antibody.

Recommended Dilutions: 1/1000-1/2000 for Immunohistochemistry and Immunocytochemistry using 2% paraformaldehyde-fixed tissues or cells.

Reactivity: Human, Mouse

Host: Chicken

Isotype: IgY

Clonality: Polyclonal

Immunogen: Chickens were immunized with two synthetic peptide / keyhole limpet hemocyanin (KLH) conjugates.

Production: These synthetic peptides corresponded to different regions of the Doublecortin gene product, but are shared between the Human (CAA06617.1, NCBI) and Mouse (AAT58219.1, NCBI) sequences. After repeated injections, immune eggs were collected, and the IgY fractions were purified from the yolks. These IgY fractions were then affinity-purified using a peptide column, and the concentrations of the eluates adjusted to 0.2 mg/ml. Finally, equal volumes of these affinity-purified anti-peptide antibodies were mixed, and the preparation was filter-sterilized.

Formulation: Sodium Phosphate-Buffered (10 mM) isotonic (0.9%, w/v) Saline (PBS, pH 7.2)

State: Purified

State: Liquid purified IgY fraction

Preservative: 0.02% Sodium Azide

Concentration: lot specific

Purification: Affinity Chromatography

Conjugation: Unconjugated



[View online »](#)

Storage: Store undiluted at 2-8°C.
This product is photosensitive and should be protected from light.

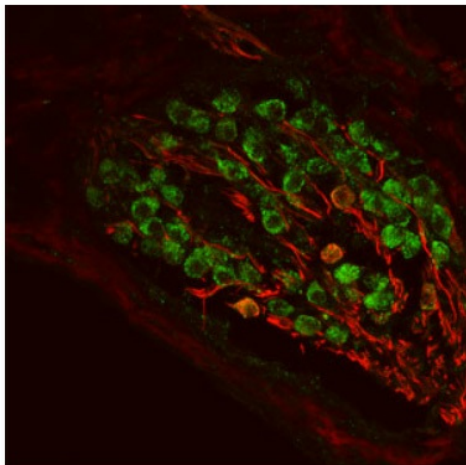
Stability: Shelf life: one year from despatch.

Gene Name: doublecortin

Database Link: [Entrez Gene 1641 Human](#)
[O43602](#)

Synonyms: Lissencephalin-X, Doublin, DCX, DBCN, LISX

Product images:



Doublecortin staining of cochlear neurons in the cochlear ganglion of an adult Mouse brain (green), red staining is neurofilament immunoreactivity, as seen using Rabbit antibody.