

## Product datasheet for **AP32837PU-T**

### **TIMP3 (175-211) Rabbit Polyclonal Antibody**

#### **Product data:**

Product Type:	Primary Antibodies
Applications:	FC, IF, IHC, IP, WB
Recommended Dilution:	<b>Flow Cytometry:</b> 0.5-1 µg/10 <sup>6</sup> cells. <b>Immunofluorescence:</b> 1-2 µg/ml. <b>Western Blotting:</b> 0.5-1 µg/ml. <b>Immunoprecipitation:</b> 1-2 µg/500 µg protein lysate. <b>Immunohistochemistry on Formalin-Fixed Paraffin Sections:</b> 1/200-1/400 for 30 minutes at RT. Staining of formalin-fixed tissues requires boiling tissue sections in 10mM citrate buffer, pH 6.0, for 10-20 min followed by cooling at RT for 20 minutes. <b>Positive Control:</b> Placenta or breast carcinoma.
Reactivity:	Bovine, Canine, Equine, Human, Mouse, Rat
Host:	Rabbit
Isotype:	IgG
Clonality:	Polyclonal
Immunogen:	A portion of amino acids 175-211 of Human TIMP3
Specificity:	This antibody recognizes TIMP-3 (Tissue Inhibitor of Metalloproteinase-3).
Formulation:	10mM PBS State: Purified State: Liquid purified IgG fraction from Serum Stabilizer: 0.05% BSA Preservative: 0.05% Sodium Azide
Concentration:	lot specific
Purification:	Protein A Chromatography
Conjugation:	Unconjugated
Storage:	Store undiluted at 2-8°C.
Stability:	Shelf life: one year from despatch.
Predicted Protein Size:	30 kDa



[View online »](#)

**Gene Name:** TIMP metalloproteinase inhibitor 3

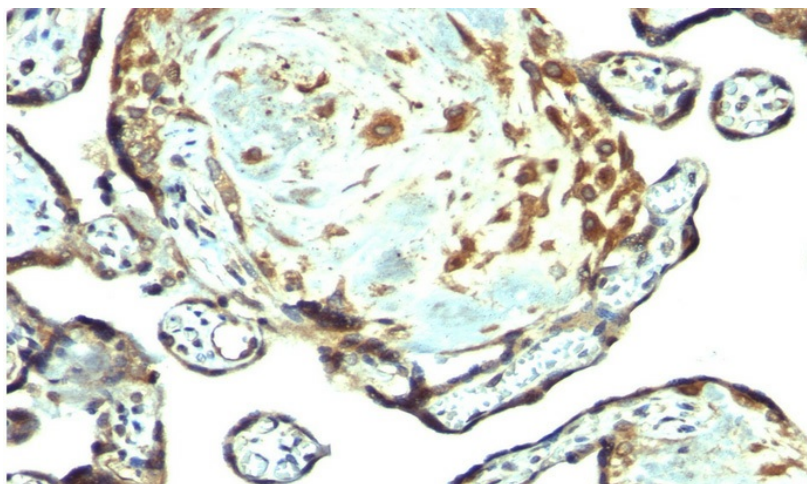
**Database Link:** [Entrez Gene 7078 Human P35625](#)

**Background:** TIMP3 (tissue inhibitor of metalloproteinases 3), along with family members TIMP1, TIMP2, and TIMP4, are inhibitors of the matrix metalloproteinases (MMPs), a group of peptidases involved in degradation of the extracellular matrix (ECM). An imbalance between MMPs and the associated TIMPs may play a significant role in the invasive phenotype of malignant tumors.

TIMP's inhibit the proteolytic invasiveness of tumor cells and normal placental trophoblast cells. TIMP-3 may be involved in regulating trophoblastic invasion of the uterus as well as in regulating remodeling of the extracellular matrix during the folding of epithelia, and in the formation, branching and expansion of epithelial tubes.

**Synonyms:** Protein MIG-5, TIMP-3

### Product images:



Formalin-Fixed, Paraffin-Embedded Human placenta stained with TIMP3 Antibody.