

Product datasheet for **AP32827AF-N**

LYZ Rabbit Polyclonal Antibody

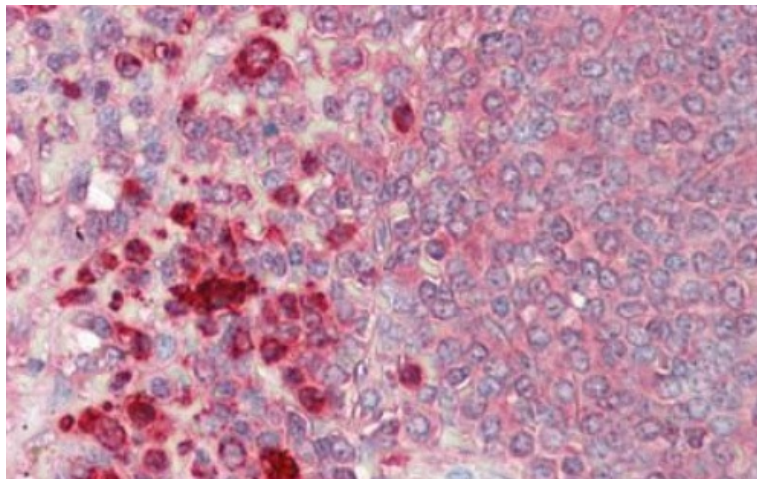
Product data:

Product Type:	Primary Antibodies
Applications:	ELISA, IF, IHC, WB
Recommended Dilution:	<p>The cytochemical grade allows the use in different types of highly sensitive immunoassays on appropriately treated cell and tissue substrates; in radioimmunoassay; for the production of immunoconjugates with a selected marker; to prepare immunoaffinity adsorbents by coupling to an artificial carrier; in non-isotopic methodology based on solid phase immunochemistry (e.g. ELISA), both as catching antibody and detection reagent; in Western blotting. This product is not pre-diluted.</p> <p><i>Recommended Working Dilutions:</i></p> <p>Histochemical and cytochemical: 1/100-1/250. ELISA and comparable non-precipitating antibody-binding assays: 1/500-1/5,000. Immunohistochemistry on Paraffin Sections: 1/400.</p>
Reactivity:	Human
Host:	Rabbit
Isotype:	IgG
Clonality:	Polyclonal
Immunogen:	Highly purified lysozyme is isolated from pooled milk. Freund's complete adjuvant is used in the first step of the immunization procedure.
Specificity:	<p>The reactivity of the antiserum is restricted to lysozyme. In immunoelectrophoresis and radial immunodiffusion (Ouchterlony), using various antiserum concentrations against normal human milk and tears a single precipitin line is obtained which shows a reaction of identity with the precipitin line obtained with purified lysozyme. No reaction is obtained with any other plasma protein component or serum.</p> <p>Cross-reactivity: The antiserum does not cross-react with any other component of human plasma.</p> <p>Inter-species cross-reactivity is a normal feature of antibodies to plasma proteins since they frequently share antigenic determinants. Cross-reactivity of this antiserum has not been tested in detail.</p>



[View online »](#)

Formulation:	PBS, pH 7.2 State: Azide Free State: Lyophilized Purified hyperimmune IgG fraction Stabilizer: None Preservative: None
Reconstitution Method:	Restore by adding 1 ml sterile distilled water
Concentration:	lot specific
Purification:	Hyperimmune antisera with strong precipitating activity are selected for fractionation by salt precipitation and purification of the IgG fraction by DEAE-chromatography
Conjugation:	Unconjugated
Storage:	Prior to reconstitution store at 2-8°C. Following reconstitution store undiluted at 2-8°C for one month or (in aliquots) at -20°C for longer. Avoid repeated freezing and thawing.
Stability:	Shelf life: one year from despatch.
Gene Name:	lysozyme (renal amyloidosis)
Database Link:	Entrez Gene 396218 Chicken P00698
Background:	Lysozyme, a bacteriolytic enzyme, has a molecular weight of about 15,000. Its concentration in plasma is low; in milk the concentration is reported to be between 5 and 220 mg/ml. Also tears contain a considerable amount of lysozyme.
Synonyms:	LYZ, LZM
Note:	Adsorption: Immunoaffinity adsorbed using insolubilized antigens as required, to eliminate antibodies cross-reacting with other plasma proteins. The use of insolubilized adsorption antigens prevents the presence of excess adsorbent protein or immune complexes in the antiserum.

Product images:

Formalin-Fixed, Paraffin-Embedded Human Spleen stained with Lysozyme C Antibody at 1/400 dilution after heat-induced antigen retrieval.