

Product datasheet for **AP32825PU-N**

Pycard Goat Polyclonal Antibody

Product data:

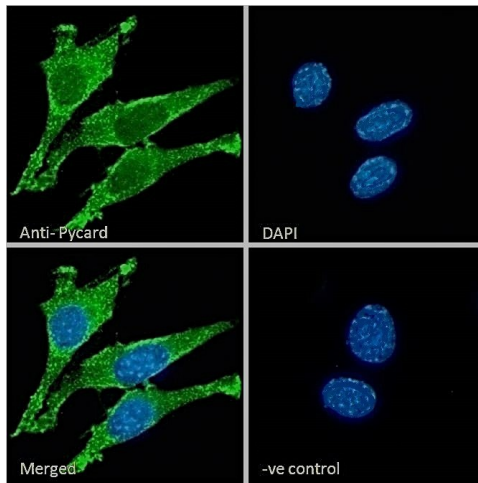
| | |
|-----------------------|-----------------------------------------------------------------------------------------------------------------------------------------------------------------------------------------------------------------------------------------------------------------------------------------------------------------------------------------------------------------------|
| Product Type: | Primary Antibodies |
| Applications: | IF, PEP-ELISA |
| Recommended Dilution: | Peptide ELISA: 1/16000 (Detection Limit). Western blot: 0.3-1µg/ml. Approx 21+24kDa band observed in Mouse Spleen lysates (calculated MW of 21.5kDa according to NP_075747.3). The observed molecular weights correspond to earlier findings with different antibodies from other commercial sources. Primary incubation 1 hour at room temperature. |
| Reactivity: | Bovine, Canine, Human, Mouse, Porcine, Rat |
| Host: | Goat |
| Clonality: | Polyclonal |
| Immunogen: | Peptide with sequence from the internal region of the protein sequence according to NP_075747.3. |
| Specificity: | Recognizes Pycard (Rodent). |
| Formulation: | Tris saline, pH~7.3 State: Aff - Purified State: Liquid purified Ig fraction Stabilizer: 0.5% BSA Preservative: 0.02% Sodium Azide |
| Concentration: | lot specific |
| Purification: | Ammonium Sulphate Precipitation followed by antigen Affinity Chromatography using the immunizing peptide |
| Conjugation: | Unconjugated |
| Storage: | Store undiluted at 2-8°C for one month or (in aliquots) at -20°C for longer. Avoid repeated freezing and thawing. |
| Stability: | Shelf life: one year from despatch. |
| Gene Name: | PYD and CARD domain containing |
| Database Link: | Entrez Gene 66824 Mouse Q9EPB4 |



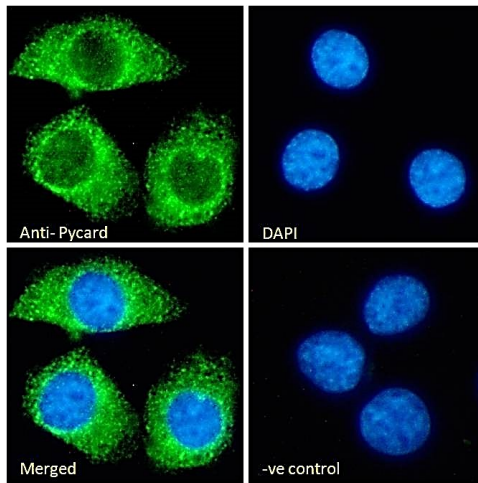
[View online »](#)

Synonyms: TMS1

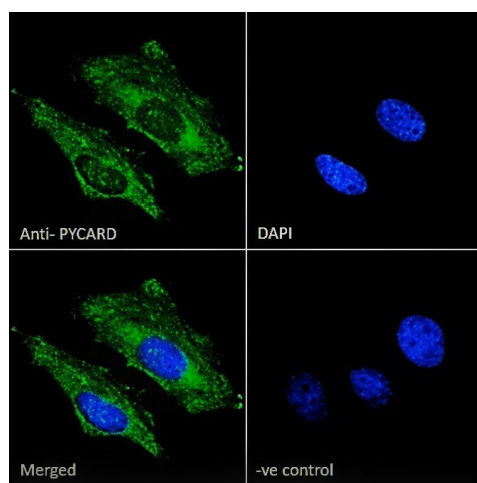
Product images:



AP32825PU-N Immunofluorescence analysis of paraformaldehyde fixed NIH3T3 cells, permeabilized with 0.15% Triton. Primary incubation 1hr (10ug/ml) followed by Alexa Fluor 488 secondary antibody (2ug/ml), showing cytoplasmic staining. The nuclear stain is DAPI (blue). egative control: Unimmunized goat IgG (10ug/ml) followed by Alexa Fluor 488 secondary antibody (2ug/ml).



AP32825PU-N Immunofluorescence analysis of paraformaldehyde fixed KNRK cells, permeabilized with 0.15% Triton. Primary incubation 1hr (10ug/ml) followed by Alexa Fluor 488 secondary antibody (2ug/ml), showing cytoplasmic staining. The nuclear stain is DAPI (blue). Egateive control: Unimmunized goat IgG (10ug/ml) followed by Alexa Fluor 488 secondary antibody (2ug/ml).



AP32825PU-N Immunofluorescence analysis of paraformaldehyde fixed HeLa cells, permeabilized with 0.15% Triton. Primary incubation 1hr (10ug/ml) followed by Alexa Fluor 488 secondary antibody (2ug/ml), showing cytoplasmic staining. The nuclear stain is DAPI (blue). egative control: Unimmunized goat IgG (10ug/ml) followed by Alexa Fluor 488 secondary antibody (2ug/ml).