

Product datasheet for **AP32821PU-N**

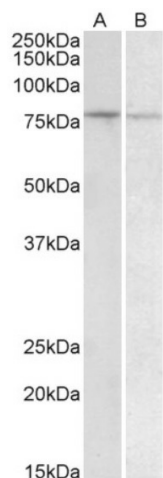
BACH1 (250-263) Goat Polyclonal Antibody

Product data:

Product Type:	Primary Antibodies
Applications:	ELISA, WB
Recommended Dilution:	Peptide ELISA: 1/128000 (Detection Limit). Western blot: 1-3 µg/ml. Approx 80kDa band observed in Human Spleen and Peripheral Blood Lymphocytes lysates (calculated MW of 82.0kDa according to NP_001177.1).
Reactivity:	Human
Host:	Goat
Clonality:	Polyclonal
Immunogen:	Peptide with sequence from the internal region (250-263) of the protein sequence according to NP_001177.1
Specificity:	Recognizes Human BACH1 (250-263). Other species not tested.
Formulation:	Tris saline, pH~7.3 State: Aff - Purified State: Liquid purified Ig fraction Stabilizer: 0.5% BSA Preservative: 0.02% Sodium Azide
Concentration:	lot specific
Purification:	Ammonium Sulphate Precipitation followed by antigen Affinity Chromatography using the immunizing peptide
Conjugation:	Unconjugated
Storage:	Store undiluted at 2-8°C for one month or (in aliquots) at -20°C for longer. Avoid repeated freezing and thawing.
Stability:	Shelf life: one year from despatch.
Gene Name:	BTB domain and CNC homolog 1
Database Link:	Entrez Gene 571 Human O14867
Synonyms:	BACH-1; HA2303



[View online »](#)

Product images:

Staining of Human Peripheral Blood Lymphocytes (A) and Human Spleen (B) lysates using BACH1 Antibody at 1 ug/ml (35ug protein in RIPA buffer). Primary incubation was 1 hour. Detected by chemiluminescence.