

Product datasheet for **AP32820PU-N**

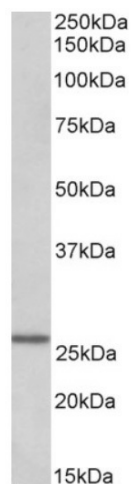
NTAL (LAT2) Goat Polyclonal Antibody

Product data:

Product Type:	Primary Antibodies
Applications:	FC, IF, PEP-ELISA, WB
Recommended Dilution:	Peptide ELISA: 1/128000 (Detection Limit). Western blot: 0.01-0.03 µg/ml. Approx 26kDa band observed in Human Peripheral Blood Lymphocytes lysates (calculated MW of 26.6kDa according to NP_054865.2).
Reactivity:	Human
Host:	Goat
Clonality:	Polyclonal
Immunogen:	Peptide with sequence from the internal region of the protein sequence according to NP_054865.2.
Specificity:	Recognizes Human LAT2. Other species not tested.
Formulation:	Tris saline, pH~7.3 State: Aff - Purified State: Liquid purified Ig fraction Stabilizer: 0.5% BSA Preservative: 0.02% Sodium Azide
Concentration:	lot specific
Purification:	Ammonium Sulphate Precipitation followed by antigen Affinity Chromatography using the immunizing peptide
Conjugation:	Unconjugated
Storage:	Store undiluted at 2-8°C for one month or (in aliquots) at -20°C for longer. Avoid repeated freezing and thawing.
Stability:	Shelf life: one year from despatch.
Gene Name:	linker for activation of T-cells family member 2
Database Link:	Entrez Gene 7462 Human Q9GZY6
Synonyms:	LAB, NTAL, WBS15, WBSCR5, HSPC046



[View online »](#)

Product images:

Staining of Human Peripheral Lymphocytes lysate using LAT2 Antibody (0.01 ug/ml) (35ug protein in RIPA buffer). Primary incubation was 1 hour. Detected by chemiluminescence.