

Product datasheet for **AP32819PU-N**

PKC beta 1 (PRKCB) Goat Polyclonal Antibody

Product data:

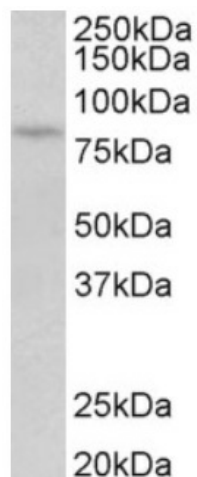
Product Type:	Primary Antibodies
Applications:	ELISA, IHC, WB
Recommended Dilution:	Peptide ELISA: 1/128000 (Detection Limit). Western blot: 0.1-0.3 µg/ml. Approx 80kDa band observed in Human Placenta lysates (calculated MW of 76.9kDa according to NP_997700.1). Immunohistochemistry on Paraffin Sections: 4-6 µg/ml. In paraffin embedded Human Spleen shows nucleolar staining in some splenocytes.
Reactivity:	Canine, Human, Rat
Host:	Goat
Clonality:	Polyclonal
Immunogen:	Peptide with sequence from the internal region (near C-terminus) of the protein sequence according to NP_997700.1.
Specificity:	This antibody is expected to recognize isoform 1 (NP_997700.1) only.
Formulation:	Tris saline, pH~7.3 State: Aff - Purified State: Liquid purified Ig fraction Stabilizer: 0.5% BSA Preservative: 0.02% Sodium Azide
Concentration:	lot specific
Purification:	Ammonium Sulphate Precipitation followed by antigen Affinity Chromatography using the immunizing peptide
Conjugation:	Unconjugated
Storage:	Store undiluted at 2-8°C for one month or (in aliquots) at -20°C for longer. Avoid repeated freezing and thawing.
Stability:	Shelf life: one year from despatch.
Gene Name:	protein kinase C beta
Database Link:	Entrez Gene 5579 Human P05771



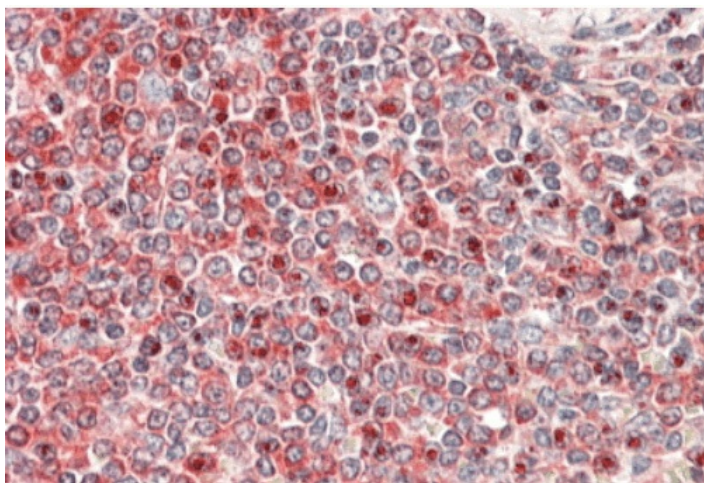
[View online »](#)

Synonyms: PKC-beta, PKC beta, PKC-B, PKCB, PRKCB1, Protein kinase C beta type

Product images:



PRKCB Antibody (0.1 ug/ml) staining of Human Placenta lysate (35ug protein in RIPA buffer). Primary incubation was 1 hour. Detected by chemiluminescence.



PRKCB Antibody (5 ug/ml) staining of paraffin embedded Human Spleen. Steamed antigen retrieval with citrate buffer pH 6, AP-staining.