

Product datasheet for **AP32817PU-N**

Plunc (BPIFA1) Goat Polyclonal Antibody

Product data:

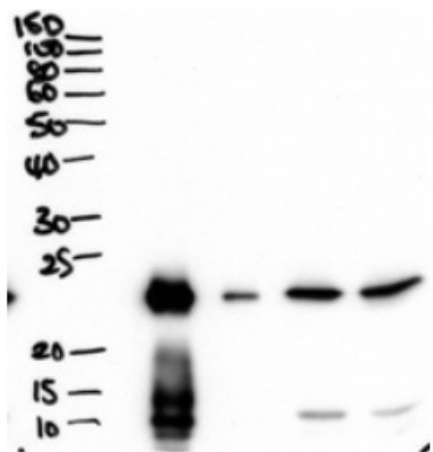
Product Type:	Primary Antibodies
Applications:	ELISA, WB
Recommended Dilution:	Peptide ELISA: 1/128000 (Detection Limit). Western blot: 1-3 µg/ml. Approx 26kDa band observed in secretions of Human primary airway cells in culture-and in Human Bronchoalveolar Lavage fluid (calculated MW of 26.7kDa according to NP_057667.1).
Reactivity:	Human
Host:	Goat
Clonality:	Polyclonal
Immunogen:	Peptide with sequence from the internal region of the protein sequence according to NP_057667.1.
Specificity:	Recognizes Human BPIFA1 / PLUNC. Other species not tested.
Formulation:	Tris saline, pH~7.3 State: Aff - Purified State: Liquid purified Ig fraction Stabilizer: 0.5% BSA Preservative: 0.02% Sodium Azide
Concentration:	lot specific
Purification:	Ammonium Sulphate Precipitation followed by antigen Affinity Chromatography using the immunizing peptide
Conjugation:	Unconjugated
Storage:	Store undiluted at 2-8°C for one month or (in aliquots) at -20°C for longer. Avoid repeated freezing and thawing.
Stability:	Shelf life: one year from despatch.
Gene Name:	BPI fold containing family A member 1
Database Link:	Entrez Gene 51297 Human Q9NP55



[View online »](#)

Synonyms: LUNX, Lung-specific protein X, NASG, SPURT, Von Ebner protein HI

Product images:



PLUNC Antibody (2 ug/ml) staining of secretions from Human primary airway cells in culture (Lanes 1 and 2), and in Human Bronchoalveolar Lavage fluid (Lanes 3 and 4). Data obtained from Dr. C Bingle, AURM, University of Sheffield, UK. Primary incubation was 1 hour. Detected by chemiluminescence.