

Product datasheet for **AP32806PU-N**

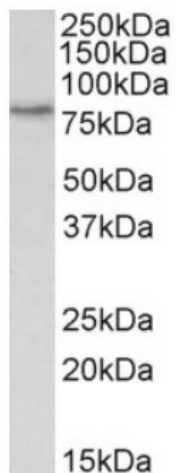
TORC2 (CRTC2) (542-553) Goat Polyclonal Antibody

Product data:

Product Type:	Primary Antibodies
Applications:	ELISA, WB
Recommended Dilution:	Peptide ELISA: 1/64000 (Detection Limit). Western blot: 1-3 µg/ml. Approx 75 to 80kDa band observed in lysates of cell line HeLa (calculated MW of 73.3kDa according to NP_859066.1).
Reactivity:	Bovine, Human, Porcine
Host:	Goat
Clonality:	Polyclonal
Immunogen:	Peptide with sequence from the internal region (542-553) of the protein sequence according to NP_859066.1.
Specificity:	Recognizes CRTC2 (542-553).
Formulation:	Tris saline, pH~7.3 State: Aff - Purified State: Liquid purified Ig fraction Stabilizer: 0.5% BSA Preservative: 0.02% Sodium Azide
Concentration:	lot specific
Purification:	Ammonium Sulphate Precipitation followed by Antigen Affinity Chromatography using the immunizing peptide
Conjugation:	Unconjugated
Storage:	Store undiluted at 2-8°C for one month or (in aliquots) at -20°C for longer. Avoid repeated freezing and thawing.
Stability:	Shelf life: one year from despatch.
Gene Name:	CREB regulated transcription coactivator 2
Database Link:	Entrez Gene 200186 Human Q53ET0
Synonyms:	TORC-2



[View online »](#)

Product images:

Staining of HeLa lysate using CRTC2 / TORC2 Antibody at 1 ug/ml (35ug protein in RIPA buffer). Primary incubation was 1 hour. Detected by chemiluminescence.