

Product datasheet for **AP32803PU-N**

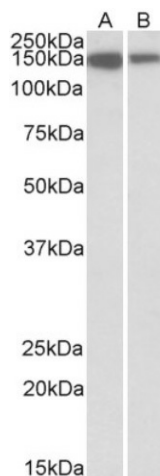
ARHGEF14 (MCF2L) Goat Polyclonal Antibody

Product data:

Product Type:	Primary Antibodies
Applications:	ELISA, WB
Recommended Dilution:	Peptide ELISA: 1/128000 (Detection Limit). Western blot: 1-3 µg/ml. Approx 150kDa band observed in lysates of cell line Jurkat and of Human Thymus (calculated MW of 131kDa according to NP_001106203.1).
Reactivity:	Bovine, Canine, Human, Mouse, Rat
Host:	Goat
Clonality:	Polyclonal
Immunogen:	Peptide with sequence from the internal region of the protein sequence according to NP_001106203.1; NP_079255.3.
Specificity:	This antibody is expected to recognize both reported isoforms (NP_001106203.1; NP_079255.3).
Formulation:	Tris saline, pH~7.3 State: Aff - Purified State: Liquid purified Ig fraction Stabilizer: 0.5% BSA Preservative: 0.02% Sodium Azide
Concentration:	lot specific
Purification:	Ammonium Sulphate Precipitation followed by Antigen Affinity Chromatography using the immunizing peptide
Conjugation:	Unconjugated
Storage:	Store undiluted at 2-8°C for one month or (in aliquots) at -20°C for longer. Avoid repeated freezing and thawing.
Stability:	Shelf life: one year from despatch.
Gene Name:	MCF.2 cell line derived transforming sequence like
Database Link:	Entrez Gene 23263 Human O15068
Synonyms:	KIAA0362, DBL's big sister



[View online »](#)

Product images:

Staining of Jurkat (A) and Human Thymus (B) lysates using MCF2L Antibody at 1 ug/ml (35ug protein in RIPA buffer). Primary incubation was 1 hour. Detected by chemiluminescence.