

## Product datasheet for **AP32802PU-N**

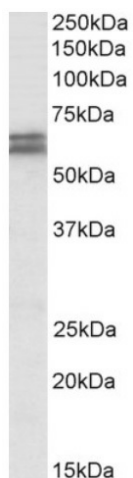
### SynCAM (CADM1) Goat Polyclonal Antibody

#### Product data:

Product Type:	Primary Antibodies
Applications:	ELISA, WB
Recommended Dilution:	<b>Peptide ELISA:</b> 1/128000 (Detection Limit). <b>Western blot:</b> 1-3 µg/ml. Approx 60-65kDa double band observed in Human Colorectal cancer lysates (calculated MW of 48.5kDa according to NP_055148.3). The observed sizes correspond to glycosylated forms.
Reactivity:	Bovine, Canine, Human, Mouse, Rat
Host:	Goat
Clonality:	Polyclonal
Immunogen:	Peptide with sequence from the internal region of the protein sequence according to NP_055148.3; NP_001091987.1.
Specificity:	This antibody recognizes CADM1
Formulation:	Tris saline, pH~7.3 State: Aff - Purified State: Liquid purified Ig fraction Stabilizer: 0.5% BSA Preservative: 0.02% Sodium Azide
Concentration:	lot specific
Purification:	Ammonium Sulphate Precipitation followed by Antigen Affinity Chromatography using the immunizing peptide
Conjugation:	Unconjugated
Storage:	Store undiluted at 2-8°C for one month or (in aliquots) at -20°C for longer. Avoid repeated freezing and thawing.
Stability:	Shelf life: one year from despatch.
Gene Name:	cell adhesion molecule 1
Database Link:	<a href="#">Entrez Gene 23705 Human Q9BY67</a>
Synonyms:	IGSF4, IGSF4A, NECL2, TSLC1, NECL-2, SgIgSF, TSLC-1



[View online »](#)

**Product images:**

CADM1 / SYNCAM Antibody staining of Human Colorectal cancer lysate at 1 ug/ml (35ug protein in RIPA buffer). Primary incubation was 1 hour. Detected by chemiluminescence.