

Product datasheet for **AP32737PU-N**

Creatine kinase M type (CKM) (N-term) Goat Polyclonal Antibody

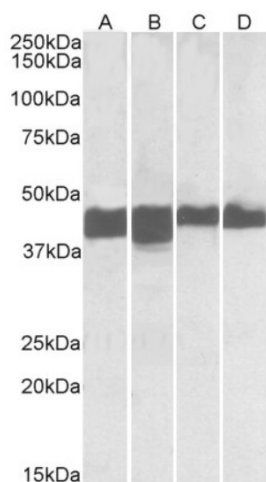
Product data:

Product Type:	Primary Antibodies
Applications:	WB
Recommended Dilution:	Peptide ELISA: 1/128000 (Detection Limit). Western blot: 0.01-0.3 µg/ml. Approx 45kDa band observed in Human and Mouse Skeletal Muscle and Heart lysates (calculated MW of 43.1kDa according to NP_001815.2).
Reactivity:	Canine, Human, Mouse
Host:	Goat
Clonality:	Polyclonal
Immunogen:	Peptide with sequence from the N-Terminus of the protein sequence according to NP_001815.2.
Specificity:	This antibody recognizes creatine kinase M-type (CKMM) at N-term.
Formulation:	Tris saline, pH~7.3 State: Aff - Purified State: Liquid purified IgG fraction Stabilizer: 0.5% BSA Preservative: 0.02% Sodium Azide
Concentration:	lot specific
Purification:	Ammonium Sulphate Precipitation followed by Antigen Affinity Chromatography using the immunizing peptide
Conjugation:	Unconjugated
Storage:	Store undiluted at 2-8°C for one month or (in aliquots) at -20°C for longer. Avoid repeated freezing and thawing.
Stability:	Shelf life: one year from despatch.
Gene Name:	creatine kinase, M-type
Database Link:	Entrez Gene 1158 Human P06732
Synonyms:	Creatine kinase M-type, Creatine kinase M chain, M-CK, CKM, Creatine kinase MM



[View online »](#)

Product images:



CKMM Antibody staining of Human (A, C) and Mouse (B, D) Skeletal Muscle (A, B) and Heart (C, D) lysates at 0.01ug/ml (35ug protein in RIPA buffer). Primary incubation was 1 hour. Detected by chemiluminescence.