

Product datasheet for **AP32734PU-N**

Dvl1 Goat Polyclonal Antibody

Product data:

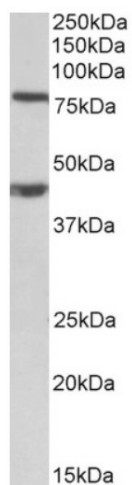
Product Type:	Primary Antibodies
Applications:	WB
Recommended Dilution:	Peptide ELISA: 1/16000 (Detection Limit). Western blot: 1-3 µg/ml. Approx 80kDa band observed in lysates of cell line NIH3T3 (calculated MW of 75.4kDa according to NP_034221.3). An additional band of unknown identity was also consistently observed at 45kDa. This band was successfully blocked by incubation with the immunizing peptide.
Reactivity:	Bovine, Mouse, Porcine, Rat
Host:	Goat
Clonality:	Polyclonal
Immunogen:	Peptide with sequence from the internal region of the protein sequence according to NP_034221.3.
Specificity:	This antibody recognizes Mouse Dvl1.
Formulation:	Tris saline, pH~7.3 State: Aff - Purified State: Liquid purified IgG fraction Stabilizer: 0.5% BSA Preservative: 0.02% Sodium Azide
Concentration:	lot specific
Purification:	Ammonium Sulphate Precipitation followed by Antigen Affinity Chromatography using the immunizing peptide
Conjugation:	Unconjugated
Storage:	Store undiluted at 2-8°C for one month or (in aliquots) at -20°C for longer. Avoid repeated freezing and thawing.
Stability:	Shelf life: one year from despatch.
Gene Name:	dishevelled segment polarity protein 1
Database Link:	Entrez Gene 13542 Mouse P51141



[View online »](#)

Synonyms: DSH homolog 1, DVL-1

Product images:



Dishevelled-1 / DVL1 Antibody staining of NIH3T3 lysate at 1ug/ml (35ug protein in RIPA buffer). Primary incubation was 1 hour. Detected by chemiluminescence.