

Product datasheet for **AP32732PU-N**

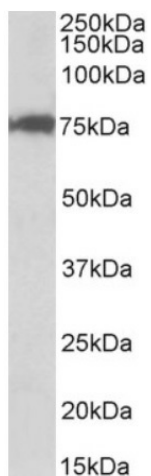
CSTF3 Goat Polyclonal Antibody

Product data:

Product Type:	Primary Antibodies
Applications:	WB
Recommended Dilution:	Peptide ELISA: 1/128000 (Detection Limit). Western blot: 0.03-0.1 µg/ml. Approx 75kDa band observed in nuclear lysates of cell line HeLa (calculated MW of 82.9kDa according to NP_001317.1). The observed molecular weight corresponds to the expected size of 77kDa.
Reactivity:	Human, Mouse, Porcine, Rat
Host:	Goat
Clonality:	Polyclonal
Immunogen:	Peptide with sequence from the internal region of the protein sequence according to NP_001317.1.
Specificity:	This antibody is expected to recognize isoform 1 (NP_001317.1) only.
Formulation:	Tris saline, pH~7.3 State: Aff - Purified State: Liquid purified IgG fraction Stabilizer: 0.5% BSA Preservative: 0.02% Sodium Azide
Concentration:	lot specific
Purification:	Ammonium Sulphate Precipitation followed by Antigen Affinity Chromatography using the immunizing peptide
Conjugation:	Unconjugated
Storage:	Store undiluted at 2-8°C for one month or (in aliquots) at -20°C for longer. Avoid repeated freezing and thawing.
Stability:	Shelf life: one year from despatch.
Gene Name:	cleavage stimulation factor subunit 3
Database Link:	Entrez Gene 1479 Human Q12996
Synonyms:	CSTF 77 kDa subunit, CstF-77, CSTF77, CF-1 77 kDa subunit



[View online »](#)

Product images:

CSTF3 Antibody staining of nuclear HeLa lysate at 0.1 ug/ml (35ug protein in RIPA buffer). Primary incubation was 1 hour. Detected by chemiluminescence.