

Product datasheet for **AP32731PU-N**

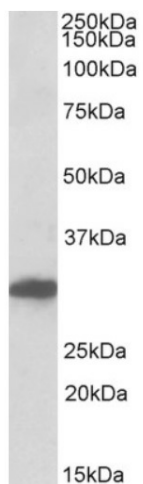
POU6F1 Goat Polyclonal Antibody

Product data:

| | |
|-----------------------|---|
| Product Type: | Primary Antibodies |
| Applications: | WB |
| Recommended Dilution: | Peptide ELISA: 1/128000 (Detection Limit). Western blot: 0.3-1 µg/ml. Approx 30kDa band observed in Human Brain (Cerebral cortex) lysates (calculated MW of 32.6kDa according to NP_002693.3). |
| Reactivity: | Bovine, Canine, Human, Mouse, Rat |
| Host: | Goat |
| Clonality: | Polyclonal |
| Immunogen: | Peptide with sequence from the internal region of the protein sequence according to NP_002693.3. |
| Specificity: | This antibody recognizes POU6F1. |
| Formulation: | Tris saline, pH~7.3 State: Aff - Purified State: Liquid purified IgG fraction Stabilizer: 0.5% BSA Preservative: 0.02% Sodium Azide |
| Concentration: | lot specific |
| Purification: | Ammonium Sulphate Precipitation followed by Antigen Affinity Chromatography using the immunizing peptide |
| Conjugation: | Unconjugated |
| Storage: | Store undiluted at 2-8°C for one month or (in aliquots) at -20°C for longer. Avoid repeated freezing and thawing. |
| Stability: | Shelf life: one year from despatch. |
| Gene Name: | POU class 6 homeobox 1 |
| Database Link: | Entrez Gene 5463 Human Q14863 |
| Synonyms: | BRN5, MPOU, TCFB1, Brain-5, Brn-5 |



[View online »](#)

Product images:

POU6F1 Antibody staining of Human Cerebral Cortex lysate at 0.3 ug/ml (35ug protein in RIPA buffer). Primary incubation was 1 hour. Detected by chemiluminescence.