

## Product datasheet for **AP32728PU-N**

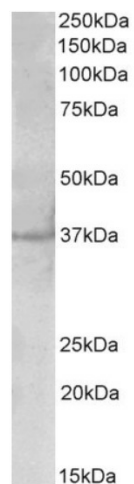
### PLK5 (309-322) Goat Polyclonal Antibody

#### Product data:

Product Type:	Primary Antibodies
Applications:	WB
Recommended Dilution:	<b>Peptide ELISA:</b> 1/64000 (Detection Limit). <b>Western blot:</b> 1-3 µg/ml. Approx 37kDa band observed in Human Brain (Cerebellum and Cerebral Cortex) lysates (calculated MW of 36.3kDa according to NP_001230008.1).
Reactivity:	Human
Host:	Goat
Clonality:	Polyclonal
Immunogen:	Peptide with sequence (aa 309-322) from the internal region of the protein sequence according to NP_001230008.1.
Specificity:	This antibody recognizes Human polo-like kinase 5 (aa309-322). Other species not tested.
Formulation:	Tris saline, pH~7.3 State: Aff - Purified State: Liquid purified IgG fraction Stabilizer: 0.5% BSA Preservative: 0.02% Sodium Azide
Concentration:	lot specific
Purification:	Ammonium Sulphate Precipitation followed by Antigen Affinity Chromatography using the immunizing peptide
Conjugation:	Unconjugated
Storage:	Store undiluted at 2-8°C for one month or (in aliquots) at -20°C for longer. Avoid repeated freezing and thawing.
Stability:	Shelf life: one year from despatch.
Gene Name:	polo like kinase 5
Database Link:	<a href="#">Entrez Gene 126520 Human Q496M5</a>
Synonyms:	Putative Polo-like kinase 5, PLK-5, FG060302



[View online »](#)

**Product images:**

PLK5 / PLK5P Antibody staining of Cerebral Cortex lysate at 2 ug/ml (35ug protein in RIPA buffer). Primary incubation was 1 hour. Detected by chemiluminescence.