

## Product datasheet for **AP32723PU-N**

### Calpain 1 (CAPN1) (468-481) Goat Polyclonal Antibody

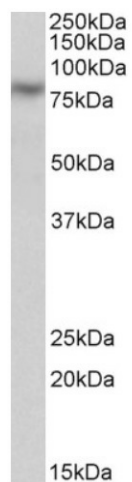
#### Product data:

Product Type:	Primary Antibodies
Applications:	WB
Recommended Dilution:	<b>Peptide ELISA:</b> 1/128000 (Detection Limit). <b>Western blot:</b> 0.3-1 µg/ml. Approx 80kDa band observed in Human Kidney lysates (calculated MW of 81.9kDa according to NP_005177.2).
Reactivity:	Bovine, Human, Porcine
Host:	Goat
Clonality:	Polyclonal
Immunogen:	Peptide with sequence from the internal region of the protein sequence according to NP_005177.2.
Specificity:	This antibody recognizes Calpain-1 (aa468-481).
Formulation:	Tris saline, pH~7.3 State: Aff - Purified State: Liquid purified IgG fraction Stabilizer: 0.5% BSA Preservative: 0.02% Sodium Azide
Concentration:	lot specific
Purification:	Ammonium Sulphate Precipitation followed by Antigen Affinity Chromatography using the immunizing peptide
Conjugation:	Unconjugated
Storage:	Store undiluted at 2-8°C for one month or (in aliquots) at -20°C for longer. Avoid repeated freezing and thawing.
Stability:	Shelf life: one year from despatch.
Gene Name:	calpain 1
Database Link:	<a href="#">Entrez Gene 823 Human P07384</a>
Synonyms:	Calpain mu-type, muCANP, CAPN1, CANPL1, PIG30, CANP1



[View online »](#)

## Product images:



Calpain-1 Antibody staining of Human Kidney lysate at 0.3ug/ml (35ug protein in RIPA buffer). Primary incubation was 1 hour. Detected by chemiluminescence.