

Product datasheet for **AP32722PU-N**

Calpain 1 (CAPN1) Goat Polyclonal Antibody

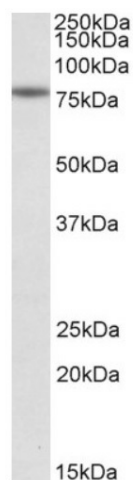
Product data:

| | |
|-----------------------|--|
| Product Type: | Primary Antibodies |
| Applications: | WB |
| Recommended Dilution: | Peptide ELISA: 1/32000 (Detection Limit). Western blot: 0.3-1 µg/ml. Approx 80kDa band observed in Human Kidney, Placenta and Spleen lysates (calculated MW of 81.9kDa according to NP_005177.2). |
| Reactivity: | Human |
| Host: | Goat |
| Clonality: | Polyclonal |
| Immunogen: | Peptide with sequence from the internal region of the protein sequence according to NP_005177.2. |
| Specificity: | This antibody recognizes Human Calpain-1. Other species not tested. |
| Formulation: | Tris saline, pH~7.3 State: Aff - Purified State: Liquid purified IgG fraction Stabilizer: 0.5% BSA Preservative: 0.02% Sodium Azide |
| Concentration: | lot specific |
| Purification: | Ammonium Sulphate Precipitation followed by Antigen Affinity Chromatography using the immunizing peptide |
| Conjugation: | Unconjugated |
| Storage: | Store undiluted at 2-8°C for one month or (in aliquots) at -20°C for longer. Avoid repeated freezing and thawing. |
| Stability: | Shelf life: one year from despatch. |
| Gene Name: | calpain 1 |
| Database Link: | Entrez Gene 823 Human P07384 |
| Synonyms: | Calpain mu-type, muCANP, CAPN1, CANPL1, PIG30, CANP1 |



[View online »](#)

Product images:



Calpain-1 Antibody staining of Human Spleen lysate at 0.3ug/ml (35ug protein in RIPA buffer). Primary incubation was 1 hour. Detected by chemiluminescence.