

## Product datasheet for **AP32720PU-N**

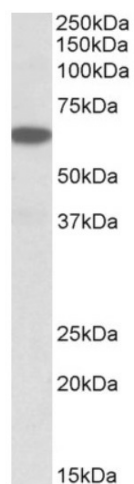
### PLA2G4C Goat Polyclonal Antibody

#### Product data:

Product Type:	Primary Antibodies
Applications:	WB
Recommended Dilution:	<b>Peptide ELISA:</b> 1/128000 (Detection Limit). <b>Western blot:</b> 0.03-0.1 µg/ml. Approx 65kDa band observed in Human Brain (Hippocampus), Liver, Pancreas, and Spleen lysates (calculated MW of 62.5kDa according to NP_001152794.1).
Reactivity:	Human
Host:	Goat
Clonality:	Polyclonal
Immunogen:	Peptide with sequence from the internal region of the protein sequence according to NP_003697.2; NP_001152794.1; NP_001152795.1.
Specificity:	This antibody is expected to recognize all reported isoforms (NP_003697.2; NP_001152794.1; NP_001152795.1).
Formulation:	Tris saline, pH~7.3 State: Aff - Purified State: Liquid purified IgG fraction Stabilizer: 0.5% BSA Preservative: 0.02% Sodium Azide
Concentration:	lot specific
Purification:	Ammonium Sulphate Precipitation followed by Antigen Affinity Chromatography using the immunizing peptide
Conjugation:	Unconjugated
Storage:	Store undiluted at 2-8°C for one month or (in aliquots) at -20°C for longer. Avoid repeated freezing and thawing.
Stability:	Shelf life: one year from despatch.
Gene Name:	phospholipase A2 group IVC
Database Link:	<a href="#">Entrez Gene 8605 Human Q9UP65</a>
Synonyms:	Cytosolic phospholipase A2 gamma, Phospholipase A2 group IVC



[View online »](#)

**Product images:**

PLA2G4C Antibody staining of Human Pancreas lysate at 0.03ug/ml (35ug protein in RIPA buffer). Primary incubation was 1 hour. Detected by chemiluminescence