

Product datasheet for **AP32719PU-N**

CDC6 Goat Polyclonal Antibody

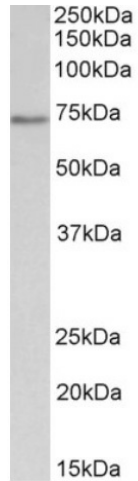
Product data:

Product Type:	Primary Antibodies
Applications:	WB
Recommended Dilution:	Peptide ELISA: 1/128000 (Detection Limit). Western blot: 0.01-0.03 µg/ml. Detects a band of Approx 70kDa in nuclear lysates of cell lines HeLa and Jurkat (calculated MW of 62.7kDa according to NP_001245.1)
Reactivity:	Human
Host:	Goat
Clonality:	Polyclonal
Immunogen:	Peptide with sequence from the internal region of the protein sequence according to NP_001245.1.
Specificity:	This antibody recognizes Human CDC6. Other species not tested.
Formulation:	Tris saline, pH~7.3 State: Aff - Purified State: Liquid purified IgG fraction Stabilizer: 0.5% BSA Preservative: 0.02% Sodium Azide
Concentration:	lot specific
Purification:	Ammonium Sulphate Precipitation followed by Antigen Affinity Chromatography using the immunizing peptide
Conjugation:	Unconjugated
Storage:	Store undiluted at 2-8°C for one month or (in aliquots) at -20°C for longer. Avoid repeated freezing and thawing.
Stability:	Shelf life: one year from despatch.
Gene Name:	cell division cycle 6
Database Link:	Entrez Gene 990 Human Q99741
Synonyms:	CDC18L, CDC6-related protein, p62(cdc6), HsCDC6, Cdc18-related protein, HsCdc18



[View online »](#)

Product images:



Staining of nuclear Jurkat lysate using CDC6 ANtibody at 0.01 ug/ml (35ug protein in RIPA buffer). Primary incubation was 1 hour. Detected by chemiluminescence.