

Product datasheet for **AP32718PU-N**

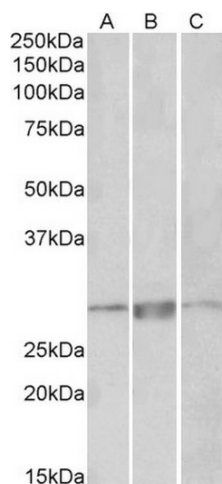
PRRX1 Goat Polyclonal Antibody

Product data:

Product Type:	Primary Antibodies
Applications:	WB
Recommended Dilution:	Peptide ELISA: 1/2000 (Detection Limit). Western blot: 1-3 µg/ml. Approx 28kDa band observed in Human, Mouse and Rat Heart lysates (calculated MW of 27.3kDa according to NP_073207.1).
Reactivity:	Human, Mouse, Rat
Host:	Goat
Clonality:	Polyclonal
Immunogen:	Peptide with sequence from the internal region of the protein sequence according to NP_008833.1; NP_073207.1.
Specificity:	This antibody is expected to recognise both reported isoforms (NP_008833.1; NP_073207.1);
Formulation:	Tris saline, pH~7.3 State: Aff - Purified State: Liquid purified IgG fraction Stabilizer: 0.5% BSA Preservative: 0.02% Sodium Azide
Concentration:	lot specific
Purification:	Ammonium Sulphate Precipitation followed by Antigen Affinity Chromatography using the immunizing peptide
Conjugation:	Unconjugated
Storage:	Store undiluted at 2-8°C for one month or (in aliquots) at -20°C for longer. Avoid repeated freezing and thawing.
Stability:	Shelf life: one year from despatch.
Gene Name:	paired related homeobox 1
Database Link:	Entrez Gene 5396 Human P54821
Synonyms:	PRX-1, PMX1, Homeobox protein PHOX1



[View online »](#)

Product images:

PRRX1 (1ug/ml) staining of Human Heart lysate (35ug protein in RIPA buffer). Primary incubation was 1 hour. Detected by chemiluminescence.