

## Product datasheet for **AP32717PU-N**

### Proteasome subunit beta type 4 (PSMB4) Goat Polyclonal Antibody

#### Product data:

Product Type:	Primary Antibodies
Applications:	ELISA, IHC, WB
Recommended Dilution:	<b>Peptide ELISA:</b> 1/16000 (Detection Limit). <b>Western blot:</b> 0.3-1.0 µg/ml. Approx 25kDa band observed in lysates of cell lines NIH3T3, HEK293, HeLa, Jurkat and K562. Primary incubation was 1 hour. <b>Immunohistochemistry on Paraffin Sections:</b> 3.75 µg/ml (Human Skin).
Reactivity:	Bovine, Canine, Human, Mouse, Rabbit, Rat
Host:	Goat
Clonality:	Polyclonal
Immunogen:	Peptide with sequence from the internal region of the protein sequence according to NP_002787.2.
Specificity:	This antibody recognizes PSMB4.
Formulation:	Tris saline, pH~7.3 State: Aff - Purified State: Liquid purified IgG fraction Stabilizer: 0.5% BSA Preservative: 0.02% Sodium Azide
Concentration:	lot specific
Purification:	Ammonium Sulphate Precipitation followed by Antigen Affinity Chromatography using the immunizing peptide
Conjugation:	Unconjugated
Storage:	Store undiluted at 2-8°C for one month or (in aliquots) at -20°C for longer. Avoid repeated freezing and thawing.
Stability:	Shelf life: one year from despatch.
Gene Name:	proteasome subunit beta 4
Database Link:	<a href="#">Entrez Gene 5692 Human P28070</a>



[View online »](#)

**Background:**

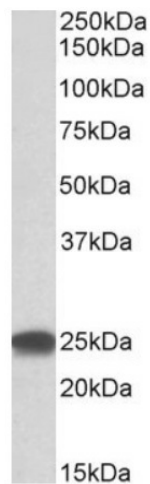
The proteasome is a multicatalytic proteinase complex with a highly ordered ring-shaped 20S core structure. The core structure is composed of 4 rings of 28 non-identical subunits; 2 rings are composed of 7 alpha subunits and 2 rings are composed of 7 beta subunits. Proteasomes are distributed throughout eukaryotic cells at a high concentration and cleave peptides in an ATP/ubiquitin-dependent process in a non-lysosomal pathway. An essential function of a modified proteasome, the immunoproteasome, is the processing of class I MHC peptides. This gene encodes a member of the proteasome B-type family, also known as the T1B family, that is a 20S core beta subunit.

**Synonyms:**

Proteasome subunit beta type-4, Proteasome beta chain, HsBPROS26, PROS-26, Macropain beta chain, Proteasome chain 3, HsN3

**Note:**

**Calculated Molecular Weight** (mature protein): 24.3kDa according to aa46-264 of NP\_002787.2.

**Product images:**

PSMB4 Antibody staining of HEK293 lysate at 0.3 ug/ml (35ug protein in RIPA buffer). Primary incubation was 1 hour. Detected by chemiluminescence.