

Product datasheet for **AP32710PU-N**

VCAM1 Goat Polyclonal Antibody

Product data:

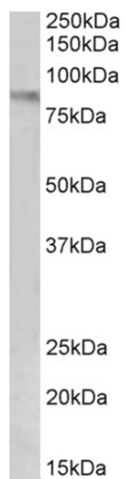
Product Type:	Primary Antibodies
Applications:	ELISA, WB
Recommended Dilution:	Peptide ELISA: 1/64000 (Detection Limit). Western blot: 1-3 µg/ml. Approx 85kDa band observed in Human Uterus lysates (calculated MW of 81.3kDa according to NP_001069.1).
Reactivity:	Human
Host:	Goat
Clonality:	Polyclonal
Immunogen:	Peptide with sequence from the internal region of the protein sequence according to NP_001069.1; NP_001186763.1.
Specificity:	This antibody is expected to recognize isoform a (NP_001069.1) and isoform c (NP_001186763.1).
Formulation:	Tris saline, pH~7.3 State: Aff - Purified State: Liquid purified IgG fraction Stabilizer: 0.5% BSA Preservative: 0.02% Sodium Azide
Concentration:	lot specific
Purification:	Ammonium Sulphate Precipitation followed by Antigen Affinity Chromatography using the immunizing peptide
Conjugation:	Unconjugated
Storage:	Store undiluted at 2-8°C for one month or (in aliquots) at -20°C for longer. Avoid repeated freezing and thawing.
Stability:	Shelf life: one year from despatch.
Predicted Protein Size:	Human.
Gene Name:	vascular cell adhesion molecule 1
Database Link:	Entrez Gene 7412 Human P19320



[View online »](#)

Synonyms: V-CAM 1, INCAM-100, L1CAM, VCAM-1

Product images:



VCAM1 Antibody staining of Human Uterus lysate at 1 ug/ml (35ug protein in RIPA buffer). Primary incubation was 1 hour. Detected by chemiluminescence.