

Product datasheet for **AP32704PU-N**

MLC1 (179-193) Goat Polyclonal Antibody

Product data:

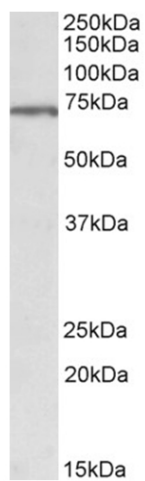
Product Type:	Primary Antibodies
Applications:	ELISA, IHC, WB
Recommended Dilution:	Peptide ELISA: 1/128000 (Detection Limit). Western blot: 1-3 µg/ml. Approx 70kDa band observed in Human Brain (Hippocampus) lysates (calculated MW of 41.1kDa according to NP_055981.1). The observed molecular weight corresponds to earlier findings in literature with different antibodies (López-Hernández et al, Hum Mol Genet. 2011 Aug 15;20(16):3266-77.PMID:21624973). Immunohistochemistry on Paraffin Sections: 5 µg/ml (Human Brain, Cortex).
Reactivity:	Human
Host:	Goat
Clonality:	Polyclonal
Immunogen:	Peptide with sequence from the internal region of the protein sequence according to NP_055981.1.
Specificity:	Recognizes MLC1 (179-193).
Formulation:	Tris saline, pH~7.3 State: Aff - Purified State: Liquid purified IgG fraction Stabilizer: 0.5% BSA Preservative: 0.02% Sodium Azide
Concentration:	lot specific
Purification:	Ammonium Sulphate Precipitation followed by Antigen Affinity Chromatography using the immunizing peptide
Conjugation:	Unconjugated
Storage:	Store undiluted at 2-8°C for one month or (in aliquots) at -20°C for longer. Avoid repeated freezing and thawing.
Stability:	Shelf life: one year from despatch.
Gene Name:	megalencephalic leukoencephalopathy with subcortical cysts 1
Database Link:	Entrez Gene 23209 Human Q15049



[View online »](#)

Synonyms: Membrane protein MLC1, KIAA0027, WKL1

Product images:



MLC1 Antibody staining of Hippocampus lysate at 1 ug/ml (35ug protein in RIPA buffer). Primary incubation was 1 hour. Detected by chemiluminescence