

## Product datasheet for **AP32703PU-N**

### Plunc (BPIFA1) (C-term) Goat Polyclonal Antibody

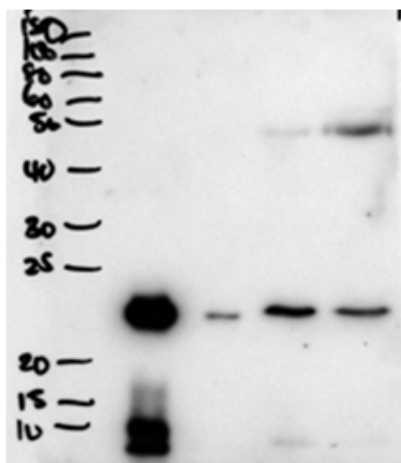
#### Product data:

Product Type:	Primary Antibodies
Applications:	ELISA, WB
Recommended Dilution:	<b>Peptide ELISA:</b> 1/64000 (Detection Limit). <b>Western blot:</b> 1-3 µg/ml. Approx 26kDa band observed in secretions of Human primary airway cells in culture-and in Human Bronchoalveolar Lavage fluid (calculated MW of 26.7kDa according to NP_057667.1).
Reactivity:	Human
Host:	Goat
Clonality:	Polyclonal
Immunogen:	Peptide with sequence from the C-Terminus of the protein sequence according to NP_057667.1.
Specificity:	Recognizes BPIFA1 / PLUNC (C-term).
Formulation:	Tris saline, pH~7.3 State: Aff - Purified State: Liquid purified IgG fraction Stabilizer: 0.5% BSA Preservative: 0.02% Sodium Azide
Concentration:	lot specific
Purification:	Ammonium Sulphate Precipitation followed by Antigen Affinity Chromatography using the immunizing peptide
Conjugation:	Unconjugated
Storage:	Store undiluted at 2-8°C for one month or (in aliquots) at -20°C for longer. Avoid repeated freezing and thawing.
Stability:	Shelf life: one year from despatch.
Gene Name:	BPI fold containing family A member 1
Database Link:	<a href="#">Entrez Gene 51297 Human Q9NP55</a>
Synonyms:	LUNX, Lung-specific protein X, NASG, SPURT, Von Ebner protein HI



[View online »](#)

## Product images:



BPIFA1 / PLUNC Antibody (2 ug/ml) staining of secretions from Human primary airway cells in culture (Lanes 1 and 2), and in Human Bronchoalveolar Lavage fluid (Lanes 3 and 4). Primary incubation was 1 hour. Detected by chemiluminescence. Data obtained from Dr. C Bingle, AURM, University of Sheffield, UK.