

Product datasheet for **AP32702PU-N**

DPM3 Goat Polyclonal Antibody

Product data:

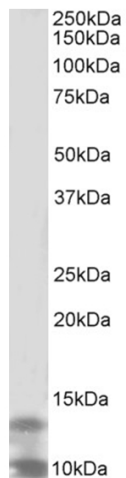
Product Type:	Primary Antibodies
Applications:	ELISA, WB
Recommended Dilution:	Peptide ELISA: 1/1000 (Detection Limit). Western blot: 1-3 µg/ml. Approx 10+13kDa bands observed in lysates of cell line K562 (calculated MW of 13.3kDa according to NP_061846.2 and 10.1kDa according to NP_714963.1).
Reactivity:	Bovine, Canine, Human, Mouse, Porcine, Rat
Host:	Goat
Clonality:	Polyclonal
Immunogen:	Peptide with sequence from the internal region of the protein sequence according to NP_061846.2; NP_714963.1.
Specificity:	This antibody is expected to recognize both reported isoforms (NP_061846.2 and NP_714963.1).
Formulation:	Tris saline, pH~7.3 State: Aff - Purified State: Liquid purified IgG fraction Stabilizer: 0.5% BSA Preservative: 0.02% Sodium Azide
Concentration:	lot specific
Purification:	Ammonium Sulphate Precipitation followed by Antigen Affinity Chromatography using the immunizing peptide
Conjugation:	Unconjugated
Storage:	Store undiluted at 2-8°C for one month or (in aliquots) at -20°C for longer. Avoid repeated freezing and thawing.
Stability:	Shelf life: one year from despatch.
Gene Name:	dolichyl-phosphate mannosyltransferase subunit 3
Database Link:	Entrez Gene 54344 Human Q9P2X0



[View online »](#)

Synonyms: Prostin-1, MPD synthase subunit 3

Product images:



(2ug/ml) staining of K562 lysate (35ug protein in RIPA buffer). Primary incubation was 1 hour. Detected by chemiluminescence.