

Product datasheet for **AP32695PU-N**

KLF2 (N-term) Goat Polyclonal Antibody

Product data:

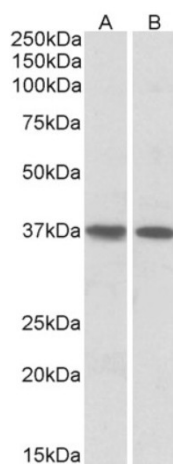
Product Type:	Primary Antibodies
Applications:	ELISA, WB
Recommended Dilution:	Peptide ELISA: 1/16000 (Detection Limit). Western blot: 1-3 µg/ml. Approx 37kDa band observed in Human Heart and Lung lysates (calculated MW of 37.4kDa according to NP_057354.1). Primary incubation was 1 hour. Preliminary testing was unsuccessful on Rat Brain and Mouse Heart for this particular batch.
Reactivity:	Bovine, Canine, Human, Mouse, Porcine, Rat
Host:	Goat
Clonality:	Polyclonal
Immunogen:	Peptide with sequence from the N-Terminus of the protein sequence according to NP_057354.1.
Specificity:	Recognizes KLF2 (N-term).
Formulation:	Tris saline, pH~7.3 State: Aff - Purified State: Liquid purified Ig fraction Stabilizer: 0.5% BSA Preservative: 0.02% Sodium Azide
Concentration:	lot specific
Purification:	Ammonium Sulphate Precipitation followed by Antigen Affinity Chromatography using the immunizing peptide
Conjugation:	Unconjugated
Storage:	Store undiluted at 2-8°C for one month or (in aliquots) at -20°C for longer. Avoid repeated freezing and thawing.
Stability:	Shelf life: one year from despatch.
Gene Name:	Kruppel-like factor 2
Database Link:	Entrez Gene 10365 Human Q9Y5W3



[View online »](#)

Synonyms: KLF2, LKLF, Krueppel-like factor 2, Lung krueppel-like factor

Product images:



AP32695PU-N (1 µg/ml) staining of Human Heart (A) and Lung (B) lysates (35 µg protein in RIPA buffer). Detected by chemiluminescence.