

Product datasheet for **AP32364PU-N**

CELA2A (C-term) Rabbit Polyclonal Antibody

Product data:

Product Type:	Primary Antibodies
Applications:	WB
Recommended Dilution:	Western Blot: 1/100-1/500.
Reactivity:	Human
Host:	Rabbit
Isotype:	Ig
Clonality:	Polyclonal
Immunogen:	KLH conjugated synthetic peptide between 230-260 amino acids from the C-terminal region of Human CELA2A.
Specificity:	This antibody recognizes Human CELA2A (C-term). Other species not tested.
Formulation:	PBS State: Purified State: Liquid purified Ig fraction Preservative: 0.09% (W/V) Sodium Azide
Concentration:	lot specific
Purification:	Protein A column, followed by peptide affinity purification
Conjugation:	Unconjugated
Storage:	Store undiluted at 2-8°C for one month or (in aliquots) at -20°C for longer. Avoid repeated freezing and thawing.
Stability:	Shelf life: one year from despatch.
Gene Name:	chymotrypsin like elastase family member 2A
Database Link:	Entrez Gene 63036 Human P08217



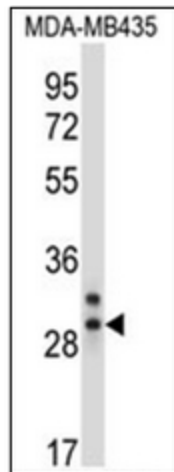
[View online »](#)

Background:

Elastases form a subfamily of serine proteases that hydrolyze many proteins in addition to elastin. Humans have six elastase genes which encode the structurally similar proteins elastase 1, 2, 2A, 2B, 3A, and 3B. Like most of the human elastases, elastase 2A is secreted from the pancreas as a zymogen. In other species, elastase 2A has been shown to preferentially cleave proteins after leucine, methionine, and phenylalanine residues.

Synonyms:

ELA2A, CELA2A

Product images:

Western blot analysis of CELA2A Antibody (C-term) in MDA-MB435 cell line lysates (35ug/lane). This demonstrates the CELA2A antibody detected the CELA2A protein (arrow).