

Product datasheet for **AP32348PU-N**

STOM (N-term) Goat Polyclonal Antibody

Product data:

Product Type:	Primary Antibodies
Applications:	ELISA, IHC, WB
Recommended Dilution:	Peptide ELISA: 1/128000 (Detection Limit). Western blot: 0.1-0.3 µg/ml. Approx 30kDa band observed in Human Erythrocytes, Spleen, Bone Marrow and Lung lysates (calculated MW of 31.7kDa according to NP_004090.4). Immunohistochemistry on Paraffin Sections: 5-10 µg/ml. In paraffin embedded Human Liver shows membrane staining of hepatocytes and of sinusoidal lining cells.
Reactivity:	Human
Host:	Goat
Clonality:	Polyclonal
Immunogen:	Peptide with sequence from the N-Terminus of the protein sequence according to NP_004090.4; NP_937837.1.
Specificity:	This antibody is expected to recognize both reported isoforms (NP_004090.4; NP_937837.1).
Formulation:	Tris saline, pH~7.3 State: Aff - Purified State: Liquid purified IgG fraction Stabilizer: 0.5% BSA Preservative: 0.02% Sodium Azide
Concentration:	lot specific
Purification:	Ammonium Sulphate Precipitation followed by Antigen Affinity Chromatography using the immunizing peptide
Conjugation:	Unconjugated
Storage:	Store undiluted at 2-8°C for one month or (in aliquots) at -20°C for longer. Avoid repeated freezing and thawing.
Stability:	Shelf life: one year from despatch.
Gene Name:	stomatin
Database Link:	Entrez Gene 2040 Human P27105



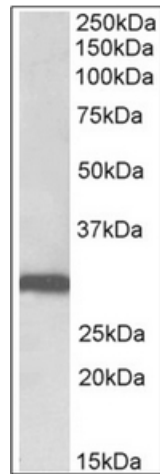
[View online »](#)

Background:

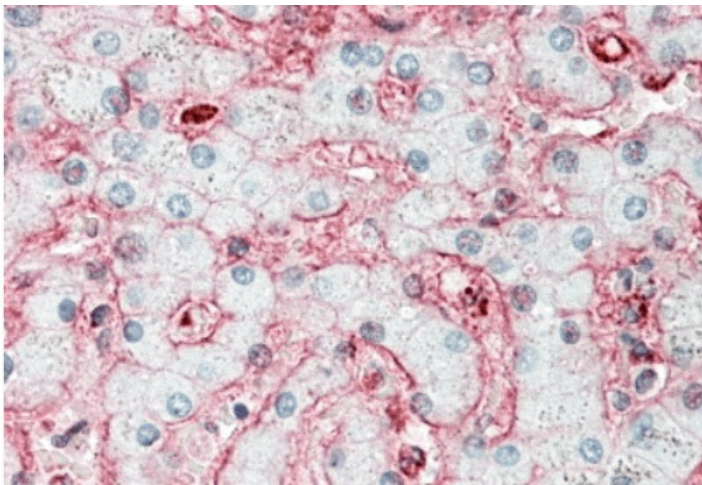
Erythrocyte band 7 integral membrane protein isoform a, also known as STOM, is a member of a highly conserved family of integral membrane proteins. STOM may regulate ACCN1 and ACCN3 gating. It is a membrane protein involved in regulation of monovalent cation transport through lipid membranes. A second function of STOM may be to act as a cytoskeletal anchor. It is a major lipid-raft component of erythrocytes and epithelial cells, and is also an abundant platelet protein.

Synonyms:

BND7, EPB72

Product images:


Staining of Human Lung lysate using Stomatin / STOM Antibody at 0.1 ug/ml (35ug protein in RIPA buffer). Primary incubation was 1 hour. Detected by chemiluminescence.



Staining of paraffin embedded Human Liver using Stomatin / STOM Antibody at 5 ug/ml. Steamed antigen retrieval with citrate buffer pH 6, AP-staining.