

## Product datasheet for **AP32344PU-N**

### IGFBP1 (156-170) Goat Polyclonal Antibody

#### Product data:

Product Type:	Primary Antibodies
Applications:	ELISA, IHC, WB
Recommended Dilution:	<b>Peptide ELISA:</b> 1/64000 (Detection Limit). <b>Western blot:</b> 1-3 µg/ml. Detects a band of Approx 30kDa band observed in Human Placenta lysates (calculated MW of 27.9kDa according to NP_000587.1). An additional band of 55kDa was consistently observed, however this band was not blocked by the immunizing peptide and it is therefore a non-specific signal. We call for caution when used for other assays than Western blot. <b>Immunohistochemistry on Paraffin Sections:</b> 10µg/ml in paraffin embedded Human Testis.
Reactivity:	Human
Host:	Goat
Clonality:	Polyclonal
Immunogen:	Peptide with sequence from the internal region of Human IGFBP1 (NP_000587.1)
Specificity:	This antibody recognizes Human IGFBP1 (156-170). Other species not tested.
Formulation:	Tris saline, pH~7.3 State: Aff - Purified State: Liquid purified IgG fraction Stabilizer: 0.5% BSA Preservative: 0.02% Sodium Azide
Concentration:	lot specific
Purification:	Ammonium Sulphate Precipitation followed by Antigen Affinity Chromatography using the immunizing peptide
Conjugation:	Unconjugated
Storage:	Store undiluted at 2-8°C for one month or (in aliquots) at -20°C for longer. Avoid repeated freezing and thawing.
Stability:	Shelf life: one year from despatch.
Gene Name:	insulin like growth factor binding protein 1

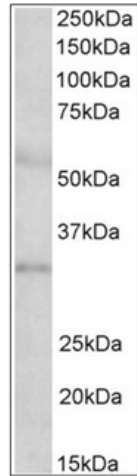


[View online »](#)

Database Link: [Entrez Gene 3484 Human P08833](#)

Synonyms: IGF-binding protein 1, IGFBP-1, IBP1, IBP-1, Placental protein 12, PP12

**Product images:**



Staining of Human Placenta lysate using IGFBP1 Antibody at 2 ug/ml (35ug protein in RIPA buffer). Primary incubation was 1 hour. Detected by chemiluminescence.