

Product datasheet for **AP32328PU-N**

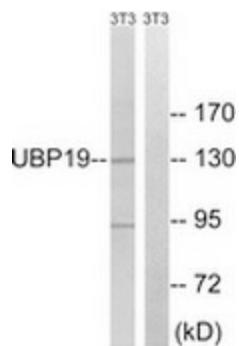
USP19 Rabbit Polyclonal Antibody

Product data:

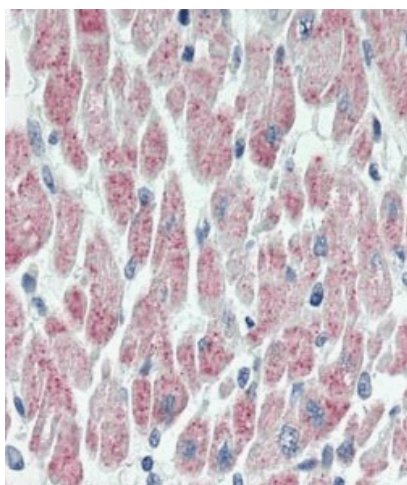
Product Type:	Primary Antibodies
Applications:	ELISA, IHC, WB
Recommended Dilution:	ELISA: 1/20000. Immunohistochemistry on Paraffin Sections: 1/200. Western Blot: 1/500 - 1/1000.
Reactivity:	Human, Mouse, Rat
Host:	Rabbit
Isotype:	IgG
Clonality:	Polyclonal
Immunogen:	Synthetic peptide derived from internal region of human USP19
Specificity:	This antibody detects endogenous levels of total USP19 protein.
Formulation:	PBS (without Mg ²⁺ , Ca ²⁺), pH 7.4, 150 mM Sodium chloride, 0.02% Sodium azide, 50% Glycerol State: Aff - Purified State: Liquid purified IgG fraction
Concentration:	lot specific
Purification:	Immunoaffinity chromatography
Conjugation:	Unconjugated
Storage:	Store undiluted at 2-8°C for one month or (in aliquots) at -20°C for longer. Avoid repeated freezing and thawing.
Stability:	Shelf life: one year from despatch.
Gene Name:	ubiquitin specific peptidase 19
Database Link:	Entrez Gene 10869 Human O94966
Synonyms:	Ubiquitin carboxyl-terminal hydrolase 19, ZMYND9, KIAA0891



[View online »](#)

Product images:

Western blot analysis of extracts from NIH-3T3 cells, using USP19 antibody. The lane on the right is treated with the synthesized peptide.



Immunohistochemistry analysis in human heart tissue (Formalin-fixed, Paraffin-embedded) using USP19 antibody.