

Product datasheet for **AP32321PU-N**

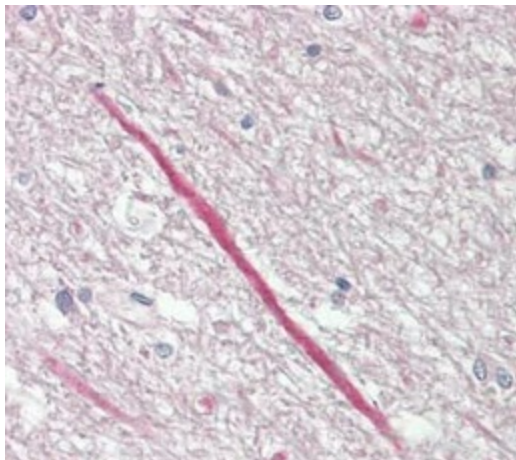
KCNT1 (C-term) Rabbit Polyclonal Antibody

Product data:

Product Type:	Primary Antibodies
Applications:	ELISA, IHC
Recommended Dilution:	ELISA: 1/10000. Immunohistochemistry on Paraffin Sections: 1/200.
Reactivity:	Human, Mouse, Rat
Host:	Rabbit
Isotype:	IgG
Clonality:	Polyclonal
Immunogen:	Synthetic peptide derived from C-terminus of human KCNT1
Specificity:	This antibody detects endogenous levels of total KCNT1 protein at C-term.
Formulation:	PBS (without Mg ²⁺ , Ca ²⁺), pH 7.4, 150 mM Sodium chloride, 0.02% Sodium azide, 50% Glycerol State: Aff - Purified State: Liquid purified IgG fraction
Concentration:	lot specific
Purification:	Immunoaffinity chromatography
Conjugation:	Unconjugated
Storage:	Store undiluted at 2-8°C for one month or (in aliquots) at -20°C for longer. Avoid repeated freezing and thawing.
Stability:	Shelf life: one year from despatch.
Gene Name:	potassium sodium-activated channel subfamily T member 1
Database Link:	Entrez Gene 57582 Human Q5JUK3
Synonyms:	KIAA1422, KCa4.1



[View online »](#)

Product images:

Immunohistochemistry analysis in human brain/cortex (Cell processes) (Formalin-fixed, Paraffin-embedded) using KCNT1 antibody.