

## Product datasheet for **AP32311PU-N**

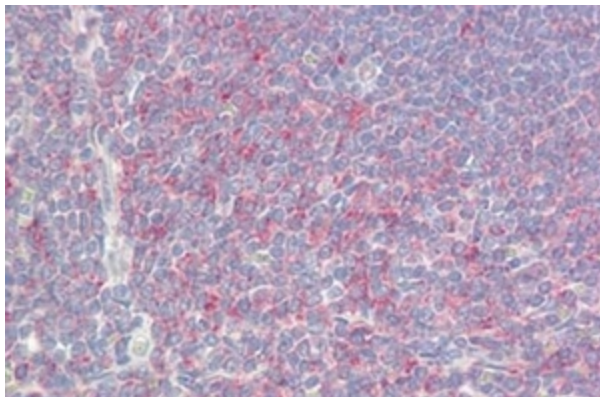
### **P311 (NREP) Rabbit Polyclonal Antibody**

#### **Product data:**

Product Type:	Primary Antibodies
Applications:	ELISA, IHC
Recommended Dilution:	<b>ELISA:</b> 1/40000. <b>Immunohistochemistry on Paraffin Sections:</b> 1/200.
Reactivity:	Human, Mouse, Rat
Host:	Rabbit
Isotype:	IgG
Clonality:	Polyclonal
Immunogen:	Synthetic peptide derived from the internal region of Human C5orf13.
Specificity:	This C5orf13 Antibody detects endogenous levels of total C5orf13 protein.
Formulation:	PBS (without Mg <sup>2+</sup> , Ca <sup>2+</sup> ), pH 7.4, 150 mM Sodium Chloride, 50% Glycerol State: Aff - Purified State: Liquid purified IgG fraction Preservative: 0.02% Sodium Azide
Concentration:	lot specific
Purification:	Immunoaffinity Chromatography
Conjugation:	Unconjugated
Storage:	Store undiluted at 2-8°C for one month or (in aliquots) at -20°C for longer. Avoid repeated freezing and thawing.
Stability:	Shelf life: one year from despatch.
Gene Name:	neuronal regeneration related protein
Database Link:	<a href="#">Entrez Gene 9315 Human Q16612</a>
Synonyms:	C5orf13, p311



[View online »](#)

**Product images:**

Human Spleen: Formalin-Fixed, Paraffin-Embedded (FFPE)