

Product datasheet for **AP32290PU-N**

RPLP2 Rabbit Polyclonal Antibody

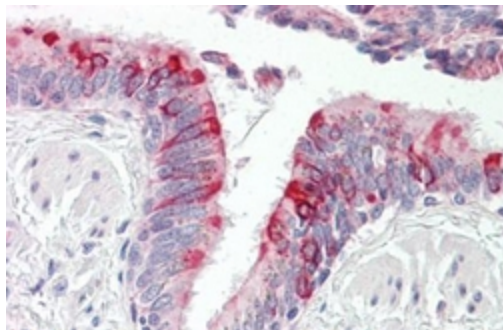
Product data:

Product Type:	Primary Antibodies
Applications:	ELISA, IHC
Recommended Dilution:	ELISA: 1/40000. Immunohistochemistry on Paraffin Sections: 1/200.
Reactivity:	Human, Mouse, Rat
Host:	Rabbit
Isotype:	IgG
Clonality:	Polyclonal
Immunogen:	Synthetic peptide derived from internal region of Human RPLP2
Specificity:	This RPLP2 Antibody detects endogenous levels of total RPLP2 protein.
Formulation:	PBS (without Mg ²⁺ , Ca ²⁺), pH 7.4, 150 mM Sodium Chloride, 50% Glycerol State: Aff - Purified State: Liquid purified IgG fraction Preservative: 0.02% Sodium Azide
Concentration:	lot specific
Purification:	Immunoaffinity Chromatography
Conjugation:	Unconjugated
Storage:	Store undiluted at 2-8°C for one month or (in aliquots) at -20°C for longer. Avoid repeated freezing and thawing.
Stability:	Shelf life: one year from despatch.
Gene Name:	ribosomal protein lateral stalk subunit P2
Database Link:	Entrez Gene 6181 Human P05387
Synonyms:	60S acidic ribosomal protein P2, D11S2243E, RPP2, NY-REN-44



[View online »](#)

Product images:



Human Lung, Respiratory Epithelium: Formalin-Fixed, Paraffin-Embedded (FFPE)