

Product datasheet for **AP32284PU-N**

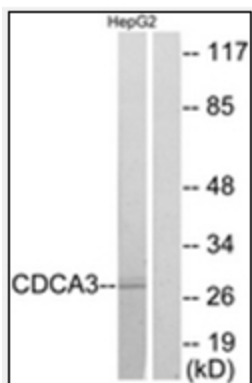
CDCA3 (C-term) Rabbit Polyclonal Antibody

Product data:

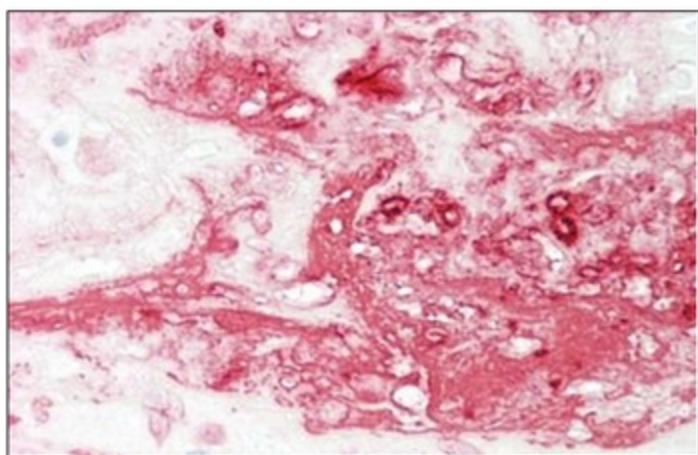
Product Type:	Primary Antibodies
Applications:	ELISA, IHC, WB
Recommended Dilution:	ELISA: 1/1000. Immunohistochemistry on Paraffin Sections: 1/200. Western Blot: 1/500 - 1/1000.
Reactivity:	Human, Mouse, Rat
Host:	Rabbit
Isotype:	IgG
Clonality:	Polyclonal
Immunogen:	Synthetic peptide derived from the C-terminal region of Human CDCA3
Specificity:	This CDCA3 Antibody detects endogenous levels of total CDCA3 protein.
Formulation:	PBS (without Mg ²⁺ , Ca ²⁺), pH 7.4, 150 mM Sodium Chloride, 50% Glycerol State: Aff - Purified State: Liquid purified IgG fraction Preservative: 0.02% Sodium Azide
Concentration:	lot specific
Purification:	Immunoaffinity Chromatography
Conjugation:	Unconjugated
Storage:	Store undiluted at 2-8°C for one month or (in aliquots) at -20°C for longer. Avoid repeated freezing and thawing.
Stability:	Shelf life: one year from despatch.
Gene Name:	cell division cycle associated 3
Database Link:	Entrez Gene 83461 Human Q99618
Synonyms:	C8, GRCC8, TOME1, TOME-1



[View online »](#)

Product images:

Western blot analysis of extracts from HepG2 cells, using CDCA3 Antibody. The lane on the right is treated with the synthesized peptide.



Human Placenta: Formalin-Fixed, Paraffin-Embedded (FFPE)