

Product datasheet for **AP32278RP-N**

Mouse IgA+IgG+IgM (H+L chain) Goat Polyclonal Antibody

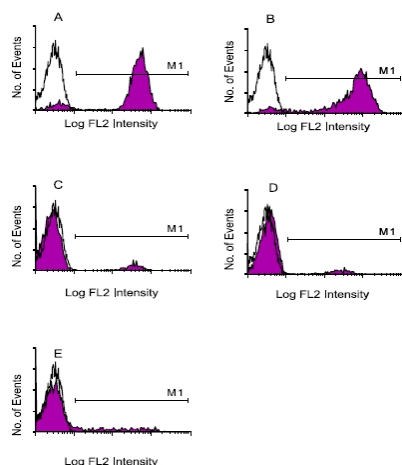
Product data:

Product Type:	Secondary Antibodies
Product Name:	Mouse IgA+IgG+IgM (H+L chain) Goat Polyclonal Antibody
Applications:	ELISA, FC, IF, IHC
Recommended Dilution:	FLISA: ? 0.1 µg/ml Flow Cytometry: ? 0.1 µg/10 ⁶ cells.
Reactivity:	Mouse
Host:	Goat
Immunogen:	Goats were hyperimmunized with Mouse IgM, IgG and IgA.
Isotype:	IgG
Formulation:	PBS containing 0.09% Sodium Azide and a stabilizing agent Label: PE State: Liquid purified Ig fraction Label: R-phycoerythrin (R-PE)
Concentration:	lot specific
Purification:	Affinity Chromatography on pooled mouse IgM+IgG+IgA covalently linked to Agarose
Conjugation:	PE
Storage:	Store undiluted at 2-8°C. DO NOT FREEZE! Protect from light!
Note:	Characterization: To insure lot-to-lot consistency, each batch of product is tested by ELISA, FLISA, and/or Flow Cytometry to conform to characteristics of a standard reference reagent.



[View online »](#)

Product images:



Immunofluorescent Staining: Human peripheral blood mononuclear cells were labeled with either Mouse anti-Human CD3 (IgG1) (A), anti-Human CD5 (IgG2a) (B), anti-Human CD22 (IgG2b) (C), anti-Human IgD (IgG3) (D) or anti-Human CD57 (IgM) (E). After washing the cells were then stained with Goat anti-Mouse Ig-R-PE Cat.-No AP32278RP (0.1 $\mu\text{g}/10^6$ cells), following which lymphocytes were gated and analyzed by Flow Cytometry.