

## Product datasheet for **AP32275PU-N**

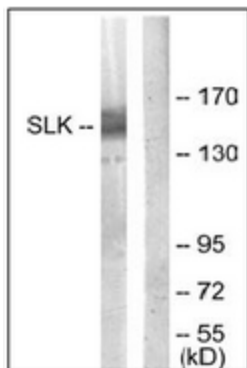
### SLK (C-term) Rabbit Polyclonal Antibody

#### Product data:

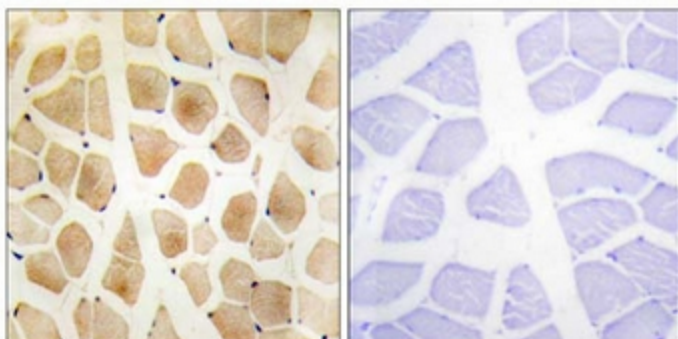
Product Type:	Primary Antibodies
Applications:	ELISA, IF, IHC, WB
Recommended Dilution:	<b>ELISA:</b> 1/5000. <b>Immunofluorescence:</b> 1/100 - 1/500. <b>Immunohistochemistry on Paraffin Sections:</b> 1/200. <b>Western Blot:</b> 1/500 - 1/1000.
Reactivity:	Human, Mouse, Rat
Host:	Rabbit
Isotype:	IgG
Clonality:	Polyclonal
Immunogen:	Synthetic peptide derived from C-terminal of Human SLK. <b>Epitope:</b> Amino acids 1151-1200.
Specificity:	This SLK Antibody detects endogenous levels of total SLK protein
Formulation:	PBS (without Mg <sup>2+</sup> , Ca <sup>2+</sup> ), pH 7.4, 150 mM Sodium Chloride, 50% Glycerol State: Aff - Purified State: Liquid purified IgG fraction Preservative: 0.02% Sodium Azide
Concentration:	lot specific
Purification:	Immunoaffinity Chromatography
Conjugation:	Unconjugated
Storage:	Store undiluted at 2-8°C for one month or (in aliquots) at -20°C for longer. Avoid repeated freezing and thawing.
Stability:	Shelf life: one year from despatch.
Predicted Protein Size:	142 kDa
Gene Name:	STE20 like kinase
Database Link:	<a href="#">Entrez Gene 9748 Human Q9H2G2</a>
Synonyms:	STE20-like kinase, STE20-related kinase, KIAA0204



[View online »](#)

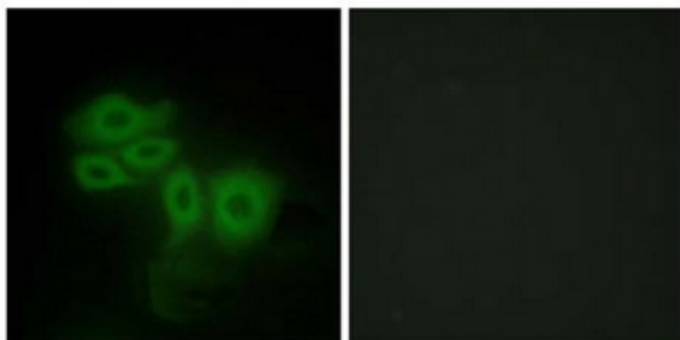
**Product images:**

Western blot analysis of extracts from COLO205 cells using SLK Antibody. The lane on the right is treated with the synthesized peptide.



Immunohistochemistry analysis of paraffin-embedded human skeletal muscle tissue using SLK Antibody.

Peptide - +



Immunofluorescence analysis of HepG2 cells using SLK Antibody. The picture on the right is treated with the synthesized peptide.