

Product datasheet for **AP32270PU-N**

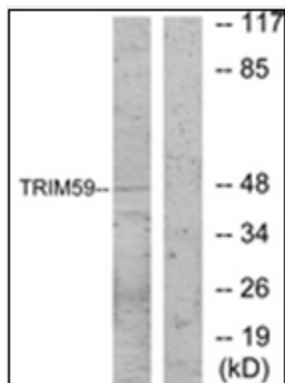
TRIM59 Rabbit Polyclonal Antibody

Product data:

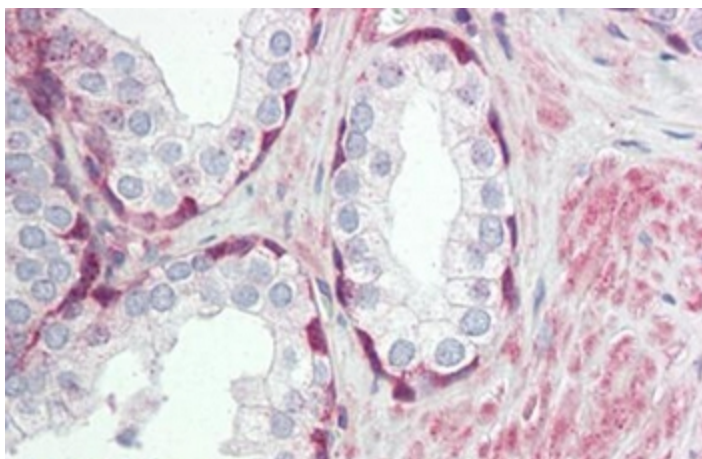
Product Type:	Primary Antibodies
Applications:	ELISA, IF, IHC, WB
Recommended Dilution:	ELISA: 1/5000. Immunofluorescence: 1/100 - 1/500. Immunohistochemistry on Paraffin Sections: 1/200. Western Blot: 1/500 - 1/1000.
Reactivity:	Human, Mouse
Host:	Rabbit
Isotype:	IgG
Clonality:	Polyclonal
Immunogen:	Synthetic peptide derived from internal region of Human TRIM59
Specificity:	This TRIM59 Antibody detects endogenous levels of total TRIM59 protein.
Formulation:	PBS (without Mg ²⁺ , Ca ²⁺), pH 7.4, 150 mM Sodium Chloride, 50% Glycerol State: Aff - Purified State: Liquid purified IgG fraction Preservative: 0.02% Sodium Azide
Concentration:	lot specific
Purification:	Immunoaffinity Chromatography
Conjugation:	Unconjugated
Storage:	Store undiluted at 2-8°C for one month or (in aliquots) at -20°C for longer. Avoid repeated freezing and thawing.
Stability:	Shelf life: one year from despatch.
Gene Name:	tripartite motif containing 59
Database Link:	Entrez Gene 286827 Human Q8IWR1
Synonyms:	TRIM57, TSBF-1, RING finger protein 104



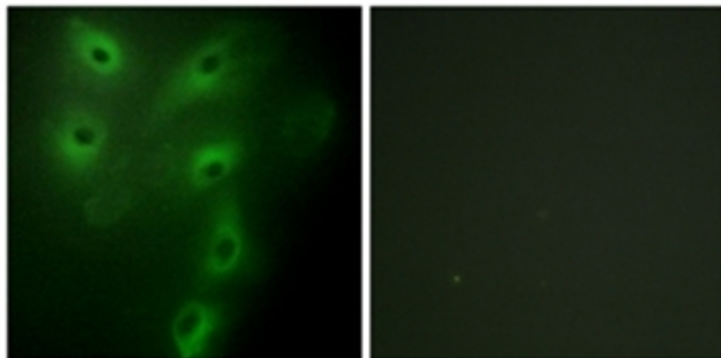
[View online »](#)

Product images:

Western blot analysis of extracts from NIH-3T3 cells, using TRIM59 Antibody. The lane on the right is treated with the synthesized peptide.



Human Prostate: Formalin-Fixed, Paraffin-Embedded (FFPE)



Immunofluorescence analysis of HeLa cells, using TRIM59 Antibody. The picture on the right is treated with the synthesized peptide