

Product datasheet for **AP32264PU-N**

TSC22D1 (N-term) Rabbit Polyclonal Antibody

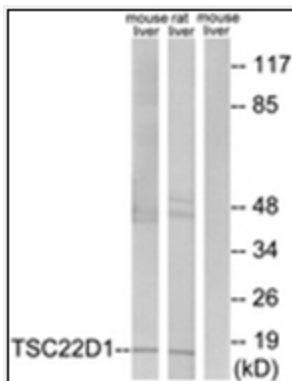
Product data:

Product Type:	Primary Antibodies
Applications:	ELISA, IF, IHC, WB
Recommended Dilution:	ELISA: 1/20000. Immunofluorescence: 1/100 - 1/500. Immunohistochemistry on Paraffin Sections: 1/200. Western Blot: 1/500 - 1/1000.
Reactivity:	Human, Mouse, Rat
Host:	Rabbit
Isotype:	IgG
Clonality:	Polyclonal
Immunogen:	Synthetic peptide derived from N-terminal region of Human TSC22
Specificity:	This Antibody detects endogenous levels of total TSC22D1 protein.
Formulation:	PBS (without Mg ²⁺ , Ca ²⁺), pH 7.4, 150 mM Sodium Chloride, 50% Glycerol State: Aff - Purified State: Liquid purified IgG fraction Preservative: 0.02% Sodium Azide
Concentration:	lot specific
Purification:	Immunoaffinity Chromatography
Conjugation:	Unconjugated
Storage:	Store undiluted at 2-8°C for one month or (in aliquots) at -20°C for longer. Avoid repeated freezing and thawing.
Stability:	Shelf life: one year from despatch.
Gene Name:	TSC22 domain family member 1
Database Link:	Entrez Gene 8848 Human Q15714
Synonyms:	TSC22 domain family protein 1, TSC22, KIAA1994, TGFB114

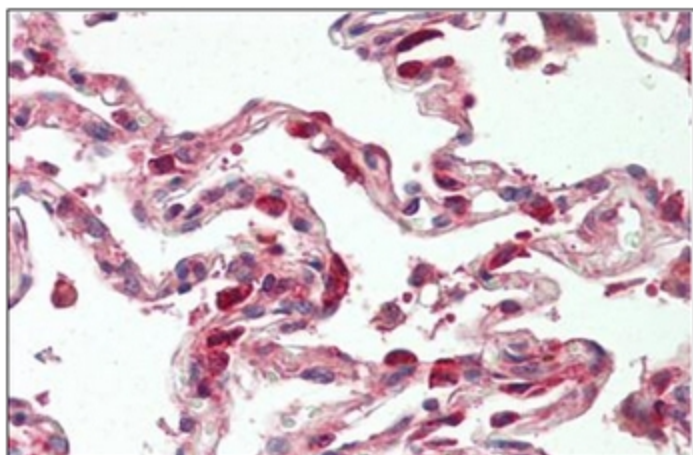


[View online »](#)

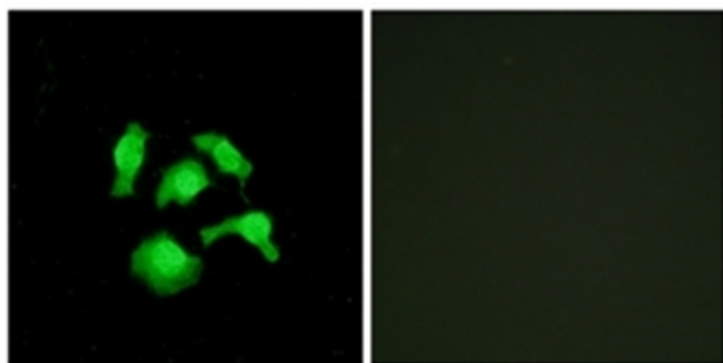
Product images:



Western blot analysis of extracts from mouse liver/rat liver cells, using TSC22D1 Antibody. The lane on the right is treated with the synthesized peptide.



Human Lung: Formalin-Fixed, Paraffin-Embedded (FFPE)



Immunofluorescence analysis of HepG2 cells, using TSC22D1 Antibody. The picture on the right is treated with the synthesized peptide.