

## Product datasheet for **AP32252PU-N**

### LRAT Rabbit Polyclonal Antibody

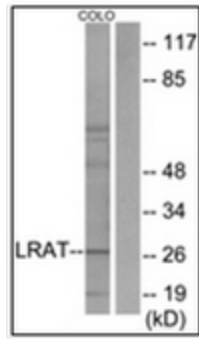
#### Product data:

Product Type:	Primary Antibodies
Applications:	ELISA, IF, IHC, WB
Recommended Dilution:	<b>ELISA:</b> 1/10000. <b>Immunofluorescence:</b> 1/100 - 1/500. <b>Immunohistochemistry on Paraffin Sections:</b> 1/200. <b>Western Blot:</b> 1/500 - 1/1000.
Reactivity:	Human, Mouse, Rat
Host:	Rabbit
Isotype:	IgG
Clonality:	Polyclonal
Immunogen:	Synthetic peptide derived from the internal region of Human LRAT
Specificity:	This LRAT Antibody detects endogenous levels of total LRAT protein.
Formulation:	PBS (without Mg <sup>2+</sup> , Ca <sup>2+</sup> ), pH 7.4, 150 mM Sodium Chloride, 50% Glycerol State: Aff - Purified State: Liquid purified IgG fraction Preservative: 0.02% Sodium Azide
Concentration:	lot specific
Purification:	Immunoaffinity Chromatography
Conjugation:	Unconjugated
Storage:	Store undiluted at 2-8°C for one month or (in aliquots) at -20°C for longer. Avoid repeated freezing and thawing.
Stability:	Shelf life: one year from despatch.
Gene Name:	lecithin retinol acyltransferase (phosphatidylcholine--retinol O-acyltransferase)
Database Link:	<a href="#">Entrez Gene 9227 Human O95237</a>
Synonyms:	Lecithin retinol acyltransferase

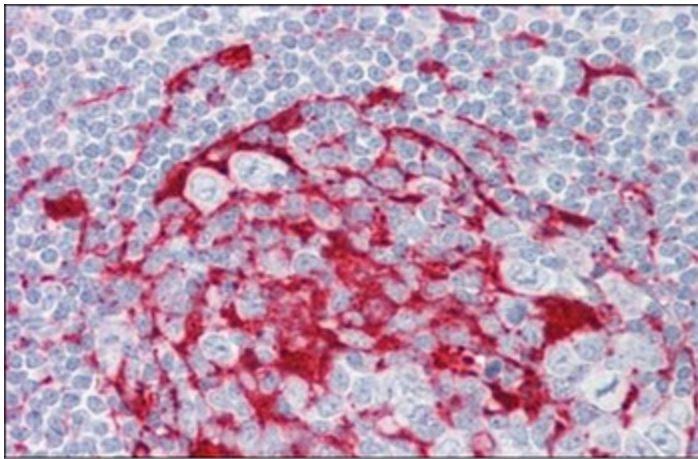


[View online »](#)

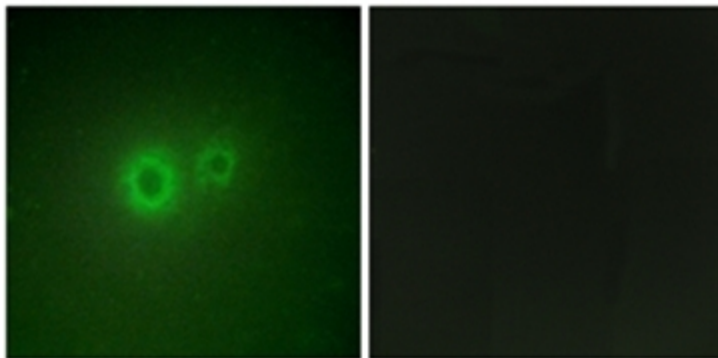
Product images:



Western blot analysis of extracts from COLO205 cells, using LRAT Antibody. The lane on the right is treated with the synthesized peptide.



Human Tonsil: Formalin-Fixed, Paraffin-Embedded (FFPE)



Immunofluorescence analysis of HuvEc cells, using LRAT Antibody. The picture on the right is treated with the synthesized peptide.