

Product datasheet for **AP32243PU-N**

Cystatin A (CSTA) Rabbit Polyclonal Antibody

Product data:

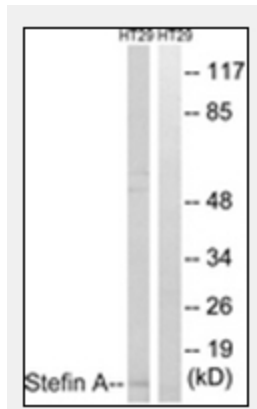
Product Type:	Primary Antibodies
Applications:	ELISA, IF, IHC, WB
Recommended Dilution:	IF (1:100 - 1:500) IHC IHC-P (1:200) Peptide-ELISA (1:5000) WB (1:500 - 1:1000)
Reactivity:	Human
Host:	Rabbit
Isotype:	IgG
Clonality:	Polyclonal
Immunogen:	Synthetic peptide from human Stefin A. (AA Range: 49-98)
Specificity:	Stefin A Antibody detects endogenous levels of total Stefin A protein.
Formulation:	PBS (without Mg ²⁺ , Ca ²⁺), pH 7.4, 150 mM NaCl, 0.02% Sodium Azide, 50% Glycerol
Concentration:	lot specific
Purification:	Immunoaffinity purified
Conjugation:	Unconjugated
Storage:	Store at -20°C for up to 1 year.
Stability:	12 months from date of despatch
Gene Name:	cystatin A
Database Link:	Entrez Gene 1475 Human P01040
Background:	Cystatin A antibody AP32243PU-N is an unconjugated rabbit polyclonal antibody to human Cystatin A (CSTA) (aa49-98). Validated for IF, IHC, Peptide-ELISA and WB. Tested on 20 paraffin-embedded human tissues.
Synonyms:	CSTA, AREI, Cystatin A (stefin A), Cystatin A, Cystatin-A, STFA, Stefin-A, STF1, Cystatin AS, Cystatin-AS



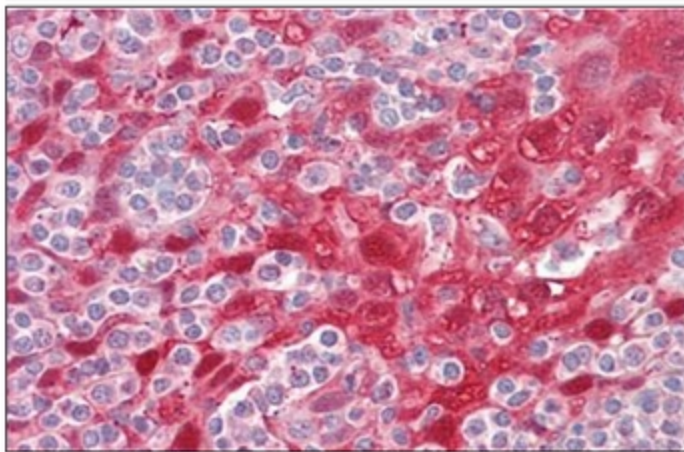
[View online »](#)

Note: Western Blot: Predicted MW 11 kDa

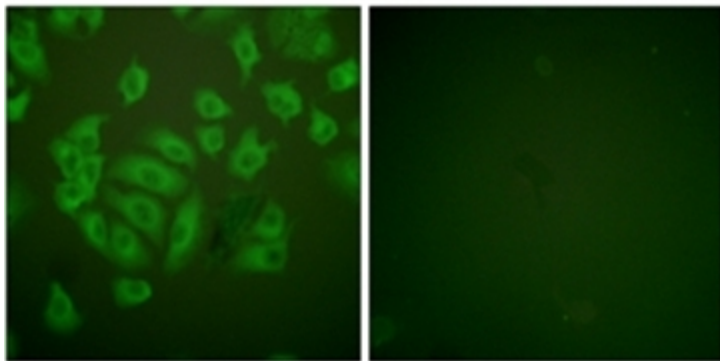
Product images:



Western blot analysis of extracts from HT29 cells, using Stefin A Antibody. The lane on the right is treated with the synthesized peptide.



Human Tonsil: Formalin-Fixed, Paraffin-Embedded (FFPE)



Immunofluorescence analysis of A549 cells, using Stefin A Antibody. The picture on the right is treated with the synthesized peptide.