

Product datasheet for **AP32226PU-N**

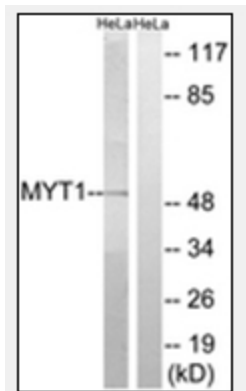
PKMYT1 Rabbit Polyclonal Antibody

Product data:

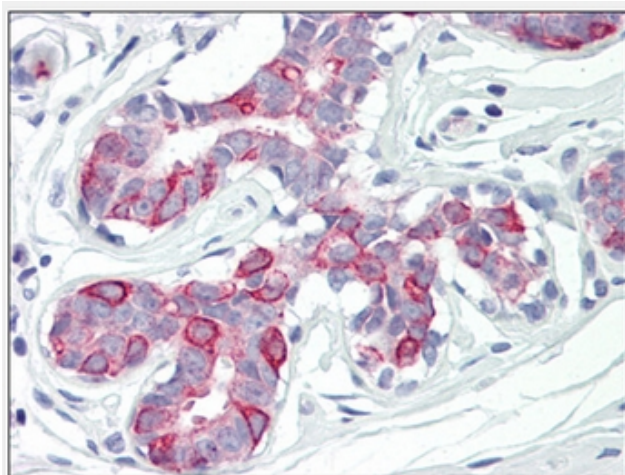
Product Type:	Primary Antibodies
Applications:	ELISA, IHC, WB
Recommended Dilution:	ELISA: 1/20000. Immunohistochemistry on Paraffin Sections: 1/200. Western Blot: 1/500 - 1/1000.
Reactivity:	Human
Host:	Rabbit
Isotype:	IgG
Clonality:	Polyclonal
Immunogen:	Synthetic peptide corresepnoding to Internal region of Human PKMYT1.
Specificity:	THis MYT1 antibody detects endogenous levels of total MYT1 protein.
Formulation:	PBS (without Mg ²⁺ , Ca ²⁺), pH 7.4, 150 mM Sodium Chloride, 50% Glycerol State: Aff - Purified State: Liquid purified IgG fraction Preservative: 0.02% Sodium Azide
Concentration:	lot specific
Purification:	Immunoaffinity Chromatography
Conjugation:	Unconjugated
Storage:	Store undiluted at 2-8°C for one month or (in aliquots) at -20°C for longer. Avoid repeated freezing and thawing.
Stability:	Shelf life: one year from despatch.
Gene Name:	protein kinase, membrane associated tyrosine/threonine 1
Database Link:	Entrez Gene 9088 Human Q99640
Synonyms:	Myt1 kinase, MYT1



[View online »](#)

Product images:

Western blot analysis of extracts from HeLa cells, using MYT1 Antibody. The lane on the right is treated with the synthesized peptide.



Human Breast: Formalin-Fixed, Paraffin-Embedded (FFPE)