

Product datasheet for **AP32195PU-N**

LC3B (MAP1LC3B) (C-term) Rabbit Polyclonal Antibody

Product data:

Product Type:	Primary Antibodies
Applications:	IHC, WB
Recommended Dilution:	ELISA: 1/1,000. Western blot: 1/100-1/500. Immunohistochemistry on Paraffin Sections: 1/50-1/100.
Reactivity:	Human
Host:	Rabbit
Isotype:	Ig
Clonality:	Polyclonal
Immunogen:	KLH conjugated synthetic peptide between 88~118 amino acids from the C-terminal region of Human LC3 (APG8b)
Specificity:	This antibody recognizes Human LC3 (APG8B) (C-term). Other species not tested.
Formulation:	PBS containing 0.09% (W/V) Sodium Azide as preservative State: Purified State: Liquid purified Ig fraction
Concentration:	lot specific
Purification:	Saturated Ammonium Sulfate precipitation followed by dialysis against PBS
Conjugation:	Unconjugated
Storage:	Store undiluted at 2-8°C for one month or (in aliquots) at -20°C for longer. Avoid repeated freezing and thawing.
Stability:	Shelf life: one year from despatch.
Gene Name:	microtubule associated protein 1 light chain 3 beta
Database Link:	Entrez Gene 81631 Human Q9GZQ8



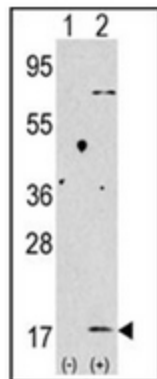
[View online »](#)

Background:

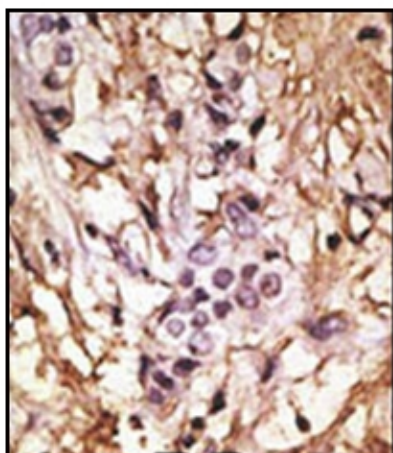
Macroautophagy is the major inducible pathway for the general turnover of cytoplasmic constituents in eukaryotic cells, it is also responsible for the degradation of active cytoplasmic enzymes and organelles during nutrient starvation. Macroautophagy involves the formation of double-membrane bound autophagosomes which enclose the cytoplasmic constituent targeted for degradation in a membrane bound structure, which then fuse with the lysosome (or vacuole) releasing a single-membrane bound autophagic bodies which are then degraded within the lysosome (or vacuole). MAP1A and MAP1B are microtubule-associated proteins which mediate the physical interactions between microtubules and components of the cytoskeleton. These proteins are involved in formation of autophagosomal vacuoles (autophagosomes). MAP1A and MAP1B each consist of a heavy chain subunit and multiple light chain subunits. MAP1LC3b is one of the light chain subunits and can associate with either MAP1A or MAP1B. The precursor molecule is cleaved by APG4B/ATG4B to form the cytosolic form, LC3-I. This is activated by APG7L/ATG7, transferred to ATG3 and conjugated to phospholipid to form the membrane-bound form, LC3-II.

Synonyms:

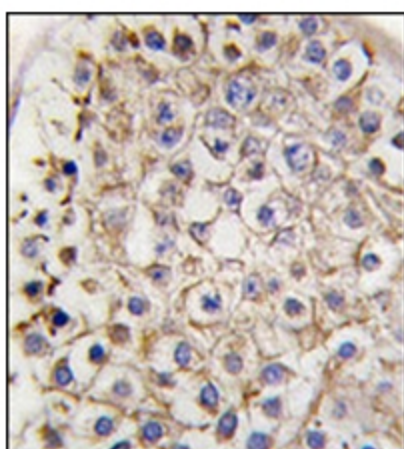
MAP1LC3B, MAP1A/MAP1B, Map1lc3b, Map1alc3, Map1lc3

Product images:

Western blot analysis of Autophagy LC3B Antibody (C-term) in 293 cell line lysates transiently transfected with the LC3 (APG8b) gene (2ug/lane).



Formalin-Fixed, Paraffin-Embedded human cancer tissue reacted with LC3B Antibody (C-term), which was peroxidase-conjugated to the secondary antibody, followed by DAB staining.



Formalin-Fixed, Paraffin-embedded human testis tissue reacted with Autophagy LC3B Antibody (C-term), which was peroxidase-conjugated to the secondary antibody, followed by DAB staining.