

## Product datasheet for **AP32182PU-N**

### **GABARAP (N-term) Rabbit Polyclonal Antibody**

#### **Product data:**

Product Type:	Primary Antibodies
Applications:	IF, IHC, WB
Recommended Dilution:	<b>ELISA:</b> 1/1,000. <b>Western blot:</b> 1/50-1/100. <b>Immunofluorescence.</b> <b>Immunohistochemistry on Paraffin Sections:</b> 1/10-1/50.
Reactivity:	Human
Host:	Rabbit
Isotype:	Ig
Clonality:	Polyclonal
Immunogen:	KLH conjugated synthetic peptide between 1~31 amino acids from the N-terminal region of Human GABARAP
Specificity:	This antibody recognizes Human GABARAP (N-term). Other species not tested.
Formulation:	PBS containing 0.09% (W/V) Sodium Azide as preservative State: Aff - Purified State: Liquid purified Ig fraction
Concentration:	lot specific
Purification:	Protein A column, followed by peptide affinity purification
Conjugation:	Unconjugated
Storage:	Store undiluted at 2-8°C for one month or (in aliquots) at -20°C for longer. Avoid repeated freezing and thawing.
Stability:	Shelf life: one year from despatch.
Predicted Protein Size:	13918 Da
Gene Name:	GABA type A receptor-associated protein
Database Link:	<a href="#">Entrez Gene 11337 Human</a> <a href="#">O95166</a>



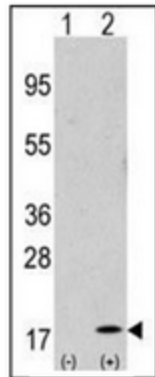
[View online »](#)

**Background:**

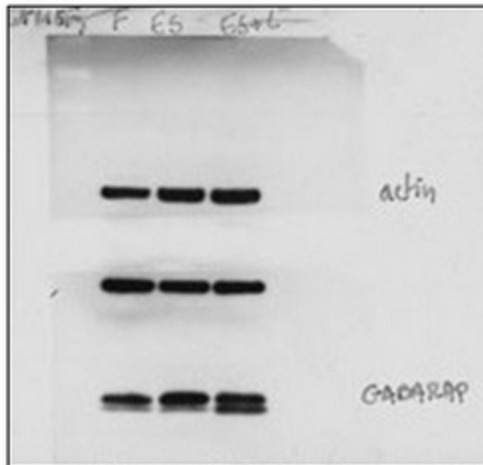
Gamma-aminobutyric acid A receptors [GABA(A) receptors] are ligand-gated chloride channels that mediate inhibitory neurotransmission. GABARAP is GABA(A) receptor-associated protein, which is highly positively charged in its N-terminus and shares sequence similarity with light chain-3 of microtubule-associated proteins 1A and 1B. This protein clusters neurotransmitter receptors by mediating interaction with the cytoskeleton.

**Synonyms:**

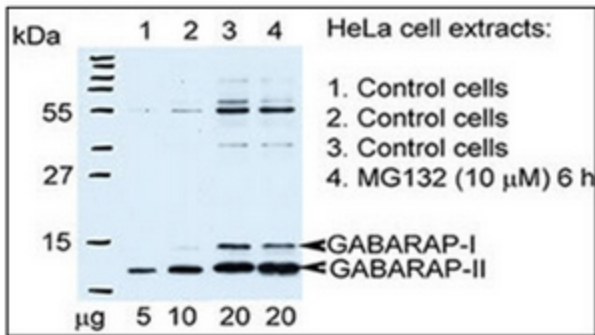
GABA Receptor Associated Protein, FLC3B

**Product images:**


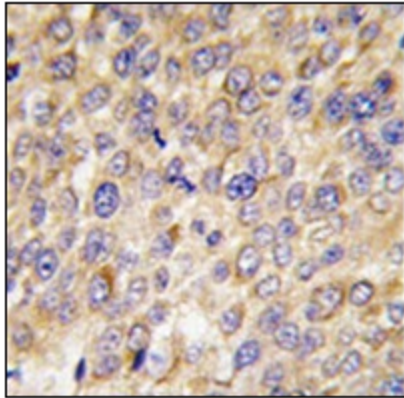
Western blot analysis of GABARAP (arrow) using Autophagy GABARAP Antibody (N-term). 293 cell lysates (2 ug/Lane) either nontransfected (Lane 1) or transiently transfected with the GABARAP gene (Lane 2) (Origene Technologies).



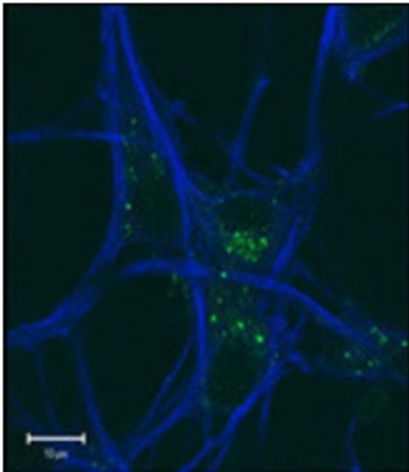
Western blot done using standard conditions on WT MEFs, starved with EBSS for 2 hours with and without leupeptin before lysing. Primary antibodies used were GABARAP Antibody (N-term), 1/250 in 5% milk (in PBS + 0.1% Tween-20) and Rabbit anti-Actin. Secondary detection by anti-Rabbit-HRP, ECL exposure 2 minutes (provided by Fiona McAlpine & Sharon Tooze).



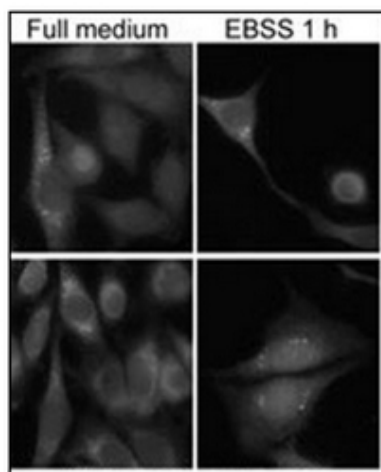
Autophagy GABARAP Antibody (N-term) at 1/75 dilution in 5% skimmed milk powder. Secondary antibody Goat anti-Rabbit-HRP ECL detection 30 sec on X-ray film.



Formalin-Fixed, Paraffin-Embedded human hepatocarcinoma tissue reacted with Autophagy GABARAP Antibody (N-term), which was peroxidase-conjugated to the secondary antibody, followed by DAB staining.



GABARAP Antibody was tested in Mouse MEFs and Mouse motor neurons. Cells were fixed in 3% PFA and permeabilized with 100% methanol. Antibodies used were GABARAP Antibody (N-term) (1/500, labeled with anti-Rabbit 488 Alexa) and Covance anti-Tuj1 (1/1000, labeled with anti-Mouse 647).



Immunofluorescence staining of Autophagy GABARAP Antibody (N-term) on paraformaldehyde-fixed, saponin-permeabilized HeLa cells. Comparison of control (full-medium) and Autophagy induced (EBSS 1 h) cells. Data courtesy of Dr. Eeva-Liisa Eskelinen, University of Helsinki, Finland.