

Product datasheet for **AP32157PU-N**

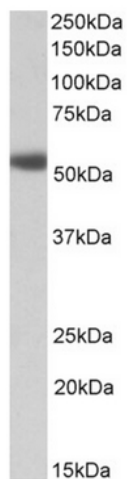
alpha 1a Adrenergic Receptor (ADRA1A) (C-term) Goat Polyclonal Antibody

Product data:

Product Type:	Primary Antibodies
Applications:	WB
Recommended Dilution:	Peptide ELISA: 1/16000 (Detection Limit). Western blot: 1-3 µg/ml. Approx 55kDa band observed in Human Heart and Prostate lysates (calculated MW of 51.5kDa according to NP_000671.2).
Reactivity:	Human
Host:	Goat
Clonality:	Polyclonal
Immunogen:	Peptide with sequence from the C Terminus of the protein sequence according to NP_000671.2.
Specificity:	This antibody is expected to recognize isoform 1 (NP_000671.2) only.
Formulation:	Tris saline, pH~7.3 State: Aff - Purified State: Liquid purified IgG fraction Stabilizer: 0.5% BSA Preservative: 0.02% Sodium Azide
Concentration:	lot specific
Purification:	Ammonium Sulphate Precipitation followed by Antigen Affinity Chromatography using the immunizing peptide
Conjugation:	Unconjugated
Storage:	Store undiluted at 2-8°C for one month or (in aliquots) at -20°C for longer. Avoid repeated freezing and thawing.
Stability:	Shelf life: one year from despatch.
Gene Name:	adrenoceptor alpha 1A
Database Link:	Entrez Gene 148 Human P35348
Synonyms:	ADRA1C, Alpha 1A-adrenoreceptor, Alpha 1A-adrenoceptor, Alpha-1C adrenergic receptor, Alpha-adrenergic receptor 1c



[View online »](#)

Product images:

Staining of Human Bone Prostate lysate using Alpha-1A adrenergic receptor antibody at 1 ug/ml (35ug protein in RIPA buffer). Primary incubation was 1 hour. Detected by chemiluminescence