

Product datasheet for **AP32147PU-N**

PTCD2 (214-226) Goat Polyclonal Antibody

Product data:

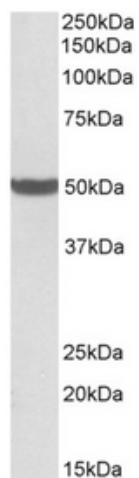
Product Type:	Primary Antibodies
Applications:	ELISA, IHC, WB
Recommended Dilution:	Peptide ELISA: 1/128000 (Detection Limit). Western blot: 0.5-2 µg/ml. Approx 50kDa band observed in all Human tissues and cell line lysates tested (calculated MW of 44.0kDa according to NP_079030.3). The observed molecular weight corresponds to earlier findings with different antibodies from other commercial sources. Immunohistochemistry on Paraffin Sections: 5 µg/ml.
Reactivity:	Human
Host:	Goat
Clonality:	Polyclonal
Immunogen:	Peptide with sequence from the internal region of the protein sequence according to NP_079030.3.
Specificity:	This antibody recognizes PTCD2 (214-226).
Formulation:	Tris saline, pH~7.3 State: Aff - Purified State: Liquid purified IgG fraction Stabilizer: 0.5% BSA Preservative: 0.02% Sodium Azide
Concentration:	lot specific
Purification:	Ammonium Sulphate Precipitation followed by Antigen Affinity Chromatography using the immunizing peptide
Conjugation:	Unconjugated
Storage:	Store undiluted at 2-8°C for one month or (in aliquots) at -20°C for longer. Avoid repeated freezing and thawing.
Stability:	Shelf life: one year from despatch.
Gene Name:	pentatricopeptide repeat domain 2
Database Link:	Entrez Gene 79810 Human Q8WV60



[View online »](#)

Synonyms: FLJ12598

Product images:



Staining of Human Liver lysate using PTCD2 antibody at 0.5 ug/ml (35ug protein in RIPA buffer). Primary incubation was 1 hour. Detected by chemiluminescence.