

Product datasheet for **AP32145PU-N**

SLC6A12 (C-term) Goat Polyclonal Antibody

Product data:

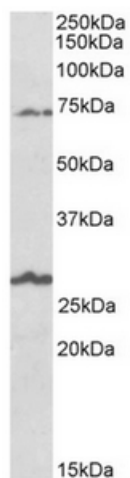
Product Type:	Primary Antibodies
Applications:	ELISA, WB
Recommended Dilution:	Peptide ELISA: 1/128000 (Detection Limit). Western Blot: 1-3 µg/ml. Approx 70kDa band observed in Human Brain lysates from several regions (calculated MW of 69.4kDa according to NP_003035.3). An additional band of unknown identity was also consistently observed at 27kDa. This band was successfully blocked by incubation with the immunizing peptide. Immunohistochemistry on Paraffin Sections: 10 µg/ml (Human Liver).
Reactivity:	Human
Host:	Goat
Clonality:	Polyclonal
Immunogen:	Peptide with sequence from the C Terminus of the protein sequence according to NP_003035.3.
Specificity:	This antibody recognizes LC6A12 / BGT1 (C-term).
Formulation:	Tris saline, pH~7.3 State: Aff - Purified State: Liquid purified IgG fraction Stabilizer: 0.5% BSA Preservative: 0.02% Sodium Azide
Concentration:	lot specific
Purification:	Ammonium Sulphate Precipitation followed by Antigen Affinity Chromatography using the immunizing peptideP
Conjugation:	Unconjugated
Storage:	Store undiluted at 2-8°C for one month or (in aliquots) at -20°C for longer. Avoid repeated freezing and thawing.
Stability:	Shelf life: one year from despatch.
Gene Name:	solute carrier family 6 member 12
Database Link:	Entrez Gene 6539 Human P48065



[View online »](#)

Synonyms: BGT-1

Product images:



Staining of Human Olfactory bulb lysate using SLC6A12 antibody at 1 ug/ml (35ug protein in RIPA buffer). Primary incubation was 1 hour. Detected by chemiluminescence