

Product datasheet for **AP32144PU-N**

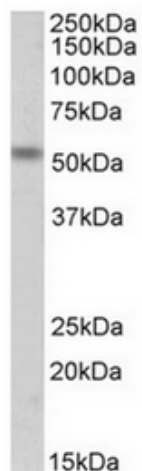
CHRNE Goat Polyclonal Antibody

Product data:

Product Type:	Primary Antibodies
Applications:	WB
Recommended Dilution:	Peptide ELISA: 1/1000 (Detection Limit). Western Blot: 1-3 µg/ml. Approx 55kDa band observed in Mouse Fetal Skeletal Muscle lysates (calculated MW of 54.9kDa according to NP_033733.1).
Reactivity:	Bovine, Human, Mouse, Rat
Host:	Goat
Clonality:	Polyclonal
Immunogen:	Peptide with sequence from the Internal region of the protein sequence according to NP_000071.1.
Specificity:	This antibody recognizes ACHRE / CHRNE
Formulation:	Tris saline, pH~7.3 State: Aff - Purified State: Liquid purified IgG fraction Stabilizer: 0.5% BSA Preservative: 0.02% Sodium Azide
Concentration:	lot specific
Purification:	Ammonium Sulphate Precipitation followed by Antigen Affinity Chromatography using the immunizing peptide
Conjugation:	Unconjugated
Storage:	Store undiluted at 2-8°C for one month or (in aliquots) at -20°C for longer. Avoid repeated freezing and thawing.
Stability:	Shelf life: one year from despatch.
Database Link:	Entrez Gene 1145 Human Q04844
Synonyms:	CHRNE, ACHRE



[View online »](#)

Product images:

Staining of Mouse Fetal Skeletal Muscle lysate using ACHRE / CHRNE antibody at 1 ug/ml (35ug protein in RIPA buffer). Primary incubation was 1 hour. Detected by chemiluminescence.