

Product datasheet for **AP32140PU-N**

UBASH3A (470-482) Goat Polyclonal Antibody

Product data:

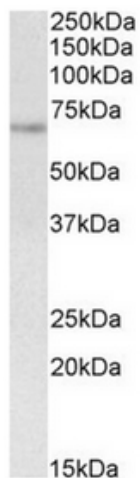
Product Type:	Primary Antibodies
Applications:	ELISA, IHC, WB
Recommended Dilution:	Peptide ELISA: 1/8000 (Detection Limit). Western Blot: 1-3 µg/ml. Approx 70kDa band observed in Human Spleen lysates (calculated MW of 69.8kDa according to NP_001001895.1). Immunohistochemistry on Paraffin Sections: 3-5 µg/ml. In paraffin embedded Human Breast shows perinuclear staining in the epithelial cells of the tubules.
Reactivity:	Human
Host:	Goat
Clonality:	Polyclonal
Immunogen:	Peptide with sequence from the internal region of the protein sequence according to NP_061834.1; NP_001001895.1.
Specificity:	This antibody is expected to recognize both reported isoforms of UBASH3A (NP_061834.1; NP_001001895.1).
Formulation:	Tris saline, pH~7.3 State: Aff - Purified State: Liquid purified IgG fraction Stabilizer: 0.5% BSA Preservative: 0.02% Sodium Azide
Concentration:	lot specific
Purification:	Ammonium Sulphate Precipitation followed by Antigen Affinity Chromatography using the immunizing peptide
Conjugation:	Unconjugated
Storage:	Store undiluted at 2-8°C for one month or (in aliquots) at -20°C for longer. Avoid repeated freezing and thawing.
Stability:	Shelf life: one year from despatch.
Gene Name:	ubiquitin associated and SH3 domain containing A
Database Link:	Entrez Gene 53347 Human P57075



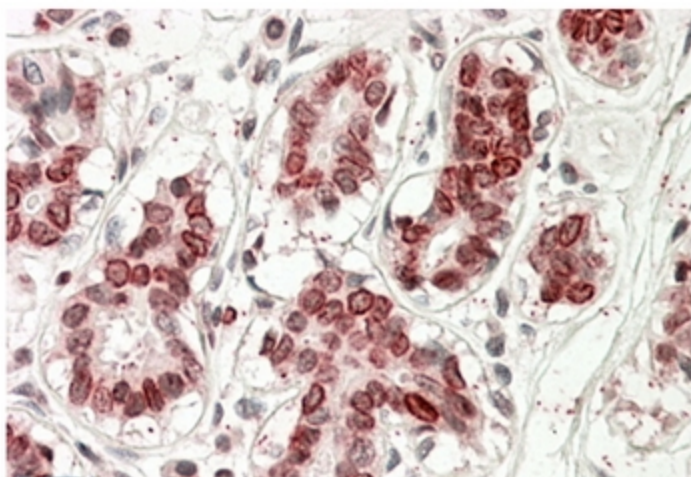
[View online »](#)

Synonyms: STS-2, CLIP4, TULA

Product images:



STS2 / TULA antibody staining of Human Spleen lysate at 1 ug/ml (35ug protein in RIPA buffer). Primary incubation was 1 hour. Detected by chemiluminescence.



STS2 / TULA antibody staining of paraffin embedded Human Breast at 3.8 ug/ml. Steamed antigen retrieval with citrate buffer pH 6, AP-staining.