

## Product datasheet for **AP32137PU-N**

### KEAP1 (41-53) Goat Polyclonal Antibody

#### Product data:

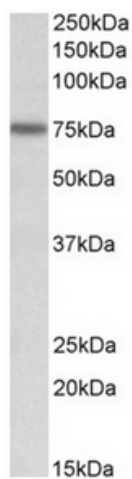
Product Type:	Primary Antibodies
Applications:	IHC, WB
Recommended Dilution:	<b>Peptide ELISA:</b> 1/32000 (Detection Limit). <b>Western blot:</b> 0.2-0.6 µg/ml. Approx 75kDa band observed in lysates of cell lines HeLa and NIH3T3 (calculated MW of 69.7kDa according to Human NP_036421.2 and of 69.6kDa according to Mouse NP_057888.1). <b>Immunohistochemistry on Paraffin Sections:</b> 3-5 µg/ml. In paraffin embedded Human Cerebellum shows textured cytoplasm staining in Purkinje cell and processes.
Reactivity:	Bovine, Canine, Human, Mouse, Porcine, Rat
Host:	Goat
Clonality:	Polyclonal
Immunogen:	Peptide with sequence from the internal region (near N Terminus) of the protein sequence according to NP_036421.2.
Specificity:	Recognizes KEAP1 (41-53)
Formulation:	Tris saline, pH~7.3 State: Aff - Purified State: Liquid purified Ig fraction Stabilizer: 0.5% BSA Preservative: 0.02% Sodium Azide
Concentration:	lot specific
Purification:	Ammonium Sulphate Precipitation followed by Antigen Affinity Chromatography using the immunizing peptide
Conjugation:	Unconjugated
Storage:	Store undiluted at 2-8°C for one month or (in aliquots) at -20°C for longer. Avoid repeated freezing and thawing.
Stability:	Shelf life: one year from despatch.
Gene Name:	kelch like ECH associated protein 1
Database Link:	<a href="#">Entrez Gene 9817 Human Q14145</a>



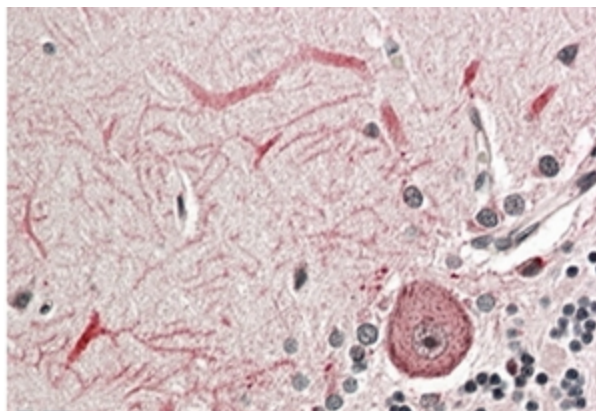
[View online »](#)

**Synonyms:** KEAP1, INRF2, KIAA0132, KLHL19, Kelch-like ECH-associated protein 1, Cytosolic inhibitor of Nrf2, INrf2, Kelch-like protein 19

**Product images:**



KEAP1 antibody staining of NIH3T3 lysate at 0.2 ug/ml (35ug protein in RIPA buffer). Primary incubation was 1 hour. Detected by chemiluminescence.



KEAP1 antibody staining of paraffin embedded Human Cerebellum at 3.8 ug/ml. Steamed antigen retrieval with citrate buffer pH 6, AP-staining.